

Return of Organization Exempt From Income Tax
 Under section 501(c), 527, or 4947(a)(1) of the Internal Revenue Code (except black lung benefit trust or private foundation)

Department of the Treasury
Internal Revenue Service

▶ The organization may have to use a copy of this return to satisfy state reporting requirements.

A For the 2010 calendar year, or tax year beginning and ending

B Check if applicable: <input type="checkbox"/> Address change <input type="checkbox"/> Name change <input type="checkbox"/> Initial return <input type="checkbox"/> Terminated <input type="checkbox"/> Amended return <input type="checkbox"/> Application pending	C Name of organization OPEN YOUR HEART TO THE HUNGRY AND HOMELESS		D Employer identification number 36-3488089
	Doing Business As		E Telephone number 651-224-8011
	Number and street (or P.O. box if mail is not delivered to street address)	Room/suite	
	City or town, state or country, and ZIP + 4 ST PAUL, MN 55101-0706		G Gross receipts \$ 969,853.
F Name and address of principal officer: JODI SCHOH SAME AS C ABOVE			H(a) Is this a group return for affiliates? <input type="checkbox"/> Yes <input checked="" type="checkbox"/> No H(b) Are all affiliates included? <input type="checkbox"/> Yes <input type="checkbox"/> No If "No," attach a list. (see instructions)
I Tax-exempt status: <input checked="" type="checkbox"/> 501(c)(3) <input type="checkbox"/> 501(c) () ◀ (insert no.) <input type="checkbox"/> 4947(a)(1) or <input type="checkbox"/> 527			
J Website: ▶ WWW.OYH.ORG			
K Form of organization: <input checked="" type="checkbox"/> Corporation <input type="checkbox"/> Trust <input type="checkbox"/> Association <input type="checkbox"/> Other ▶			L Year of formation: 1986
			M State of legal domicile: MN

Part I Summary		Prior Year	Current Year
Activities & Governance	1 Briefly describe the organization's mission or most significant activities: <u>TO ALLEVIATE HUNGER AND HOMELESSNESS IN MINNESOTA.</u>		
	2 Check this box <input type="checkbox"/> if the organization discontinued its operations or disposed of more than 25% of its net assets.		
	3 Number of voting members of the governing body (Part VI, line 1a)	3	17
	4 Number of independent voting members of the governing body (Part VI, line 1b)	4	17
	5 Total number of individuals employed in calendar year 2010 (Part V, line 2a)	5	4
	6 Total number of volunteers (estimate if necessary)	6	0
	7a Total unrelated business revenue from Part VIII, column (C), line 12	7a	0.
b Net unrelated business taxable income from Form 990-T, line 34	7b	0.	
Revenue	8 Contributions and grants (Part VIII, line 1h)	905,954.	959,836.
	9 Program service revenue (Part VIII, line 2g)	0.	0.
	10 Investment income (Part VIII, column (A), lines 3, 4, and 7d)	852.	732.
	11 Other revenue (Part VIII, column (A), lines 5, 6d, 8c, 9c, 10c, and 11e)	2,876.	9,285.
	12 Total revenue - add lines 8 through 11 (must equal Part VIII, column (A), line 12)	909,682.	969,853.
	Expenses	13 Grants and similar amounts paid (Part IX, column (A), lines 1-3)	733,093.
14 Benefits paid to or for members (Part IX, column (A), line 4)		0.	0.
15 Salaries, other compensation, employee benefits (Part IX, column (A), lines 5-10)		134,802.	127,940.
16a Professional fundraising fees (Part IX, column (A), line 11e)		0.	0.
b Total fundraising expenses (Part IX, column (D), line 25) ▶ 69,176.			
17 Other expenses (Part IX, column (A), lines 11a-11d, 11f-24f)		56,393.	57,263.
18 Total expenses. Add lines 13-17 (must equal Part IX, column (A), line 25)	924,288.	973,629.	
19 Revenue less expenses. Subtract line 18 from line 12	-14,606.	-3,776.	
Net Assets or Fund Balances	20 Total assets (Part X, line 16)	Beginning of Current Year 1,017,479.	End of Year 1,012,449.
	21 Total liabilities (Part X, line 26)	85,505.	84,251.
	22 Net assets or fund balances. Subtract line 21 from line 20	931,974.	928,198.

Part II Signature Block

Under penalties of perjury, I declare that I have examined this return, including accompanying schedules and statements, and to the best of my knowledge and belief, it is true, correct, and complete. Declaration of preparer (other than officer) is based on all information of which preparer has any knowledge.

Sign Here	▶ Signature of officer	Date			
	▶ JODI SCHOH, TREASURER Type or print name and title				
Paid Preparer Use Only	Print/Type preparer's name ERIC HAUKKALA, CPA	Preparer's signature ERIC HAUKKALA, CPA	Date 06/29/11	Check <input type="checkbox"/> if self-employed	PTIN
	Firm's name ▶ THOMAS LEWIS & ASSOCIATES, P.A.	Firm's address ▶ 750 SOUTH PLAZA DRIVE SUITE 208 MENDOTA HEIGHTS, MN 55120	Firm's EIN ▶	Phone no. (651) 690-5498	

May the IRS discuss this return with the preparer shown above? (see instructions) Yes No

Part III Statement of Program Service Accomplishments

Check if Schedule O contains a response to any question in this Part III

1 Briefly describe the organization's mission: TO ALLEVIATE HUNGER AND HOMELESSNESS IN MINNESOTA BY FUNDING ORGANIZATIONS THAT PROVIDE FOOD, HOUSING AND EDUCATIONAL OPPORTUNITIES AND TO PROMOTE AWARENESS ABOUT THE ISSUES OF HUNGER AND HOMELESSNESS.

2 Did the organization undertake any significant program services during the year which were not listed on the prior Form 990 or 990-EZ? Yes No

3 Did the organization cease conducting, or make significant changes in how it conducts, any program services? Yes No

4 Describe the exempt purpose achievements for each of the organization's three largest program services by expenses. Section 501(c)(3) and 501(c)(4) organizations and section 4947(a)(1) trusts are required to report the amount of grants and allocations to others, the total expenses, and revenue, if any, for each program service reported.

4a (Code:) (Expenses \$ 660,760. including grants of \$) (Revenue \$) PROVIDED FINANCIAL ASSISTANCE STATEWIDE TO LOCAL FOOD SHELVES, FOOD BANKS AND ON-SITE FEEDING PROGRAMS, HOMELESS SHELTERS AND TRANSITIONAL AND PERMANENT SUPPORTIVE HOUSING PROGRAMS.

4b (Code:) (Expenses \$ 127,666. including grants of \$) (Revenue \$) PROVIDED EDUCATION GRANTS TO HOMELESS SHELTERS AND HOUSING PROGRAMS THAT SERVE THEM. PROVIDING STUDENTS WITH SCHOOL SUPPLIES, ACTIVITY FEES AND OTHER NECESSITIES FOR A GOOD EDUCATION HELPS THEM TO SUCCEED IN SCHOOL.

4c (Code:) (Expenses \$ 72,280. including grants of \$) (Revenue \$) RAISED AWARENESS OF HUNGER AND HOMELESSNESS THROUGH PUBLICATIONS, PRESENTATIONS AND A WEBSITE.

4d Other program services. (Describe in Schedule O.) (Expenses \$ including grants of \$) (Revenue \$)

4e Total program service expenses 860,706.

Part IV Checklist of Required Schedules

		Yes	No
1	Is the organization described in section 501(c)(3) or 4947(a)(1) (other than a private foundation)? <i>If "Yes," complete Schedule A</i>	X	
2	Is the organization required to complete Schedule B, Schedule of Contributors?	X	
3	Did the organization engage in direct or indirect political campaign activities on behalf of or in opposition to candidates for public office? <i>If "Yes," complete Schedule C, Part I</i>		X
4	Section 501(c)(3) organizations. Did the organization engage in lobbying activities, or have a section 501(h) election in effect during the tax year? <i>If "Yes," complete Schedule C, Part II</i>		X
5	Is the organization a section 501(c)(4), 501(c)(5), or 501(c)(6) organization that receives membership dues, assessments, or similar amounts as defined in Revenue Procedure 98-19? <i>If "Yes," complete Schedule C, Part III</i>		
6	Did the organization maintain any donor advised funds or any similar funds or accounts where donors have the right to provide advice on the distribution or investment of amounts in such funds or accounts? <i>If "Yes," complete Schedule D, Part I</i>		X
7	Did the organization receive or hold a conservation easement, including easements to preserve open space, the environment, historic land areas, or historic structures? <i>If "Yes," complete Schedule D, Part II</i>		X
8	Did the organization maintain collections of works of art, historical treasures, or other similar assets? <i>If "Yes," complete Schedule D, Part III</i>		X
9	Did the organization report an amount in Part X, line 21; serve as a custodian for amounts not listed in Part X; or provide credit counseling, debt management, credit repair, or debt negotiation services? <i>If "Yes," complete Schedule D, Part IV</i>		X
10	Did the organization, directly or through a related organization, hold assets in term, permanent, or quasi-endowments? <i>If "Yes," complete Schedule D, Part V</i>		X
11	If the organization's answer to any of the following questions is "Yes," then complete Schedule D, Parts VI, VII, VIII, IX, or X as applicable.		
a	Did the organization report an amount for land, buildings, and equipment in Part X, line 10? <i>If "Yes," complete Schedule D, Part VI</i>	X	
b	Did the organization report an amount for investments - other securities in Part X, line 12 that is 5% or more of its total assets reported in Part X, line 16? <i>If "Yes," complete Schedule D, Part VII</i>		X
c	Did the organization report an amount for investments - program related in Part X, line 13 that is 5% or more of its total assets reported in Part X, line 16? <i>If "Yes," complete Schedule D, Part VIII</i>		X
d	Did the organization report an amount for other assets in Part X, line 15 that is 5% or more of its total assets reported in Part X, line 16? <i>If "Yes," complete Schedule D, Part IX</i>		X
e	Did the organization report an amount for other liabilities in Part X, line 25? <i>If "Yes," complete Schedule D, Part X</i>		X
f	Did the organization's separate or consolidated financial statements for the tax year include a footnote that addresses the organization's liability for uncertain tax positions under FIN 48 (ASC 740)? <i>If "Yes," complete Schedule D, Part X</i>		X
12a	Did the organization obtain separate, independent audited financial statements for the tax year? <i>If "Yes," complete Schedule D, Parts XI, XII, and XIII</i>	X	
b	Was the organization included in consolidated, independent audited financial statements for the tax year? <i>If "Yes," and if the organization answered "No" to line 12a, then completing Schedule D, Parts XI, XII, and XIII is optional</i>		X
13	Is the organization a school described in section 170(b)(1)(A)(ii)? <i>If "Yes," complete Schedule E</i>		X
14a	Did the organization maintain an office, employees, or agents outside of the United States?		X
b	Did the organization have aggregate revenues or expenses of more than \$10,000 from grantmaking, fundraising, business, and program service activities outside the United States? <i>If "Yes," complete Schedule F, Parts I and IV</i>		X
15	Did the organization report on Part IX, column (A), line 3, more than \$5,000 of grants or assistance to any organization or entity located outside the United States? <i>If "Yes," complete Schedule F, Parts II and IV</i>		X
16	Did the organization report on Part IX, column (A), line 3, more than \$5,000 of aggregate grants or assistance to individuals located outside the United States? <i>If "Yes," complete Schedule F, Parts III and IV</i>		X
17	Did the organization report a total of more than \$15,000 of expenses for professional fundraising services on Part IX, column (A), lines 6 and 11e? <i>If "Yes," complete Schedule G, Part I</i>		X
18	Did the organization report more than \$15,000 total of fundraising event gross income and contributions on Part VIII, lines 1c and 8a? <i>If "Yes," complete Schedule G, Part II</i>		X
19	Did the organization report more than \$15,000 of gross income from gaming activities on Part VIII, line 9a? <i>If "Yes," complete Schedule G, Part III</i>		X
20a	Did the organization operate one or more hospitals? <i>If "Yes," complete Schedule H</i>		X
b	If "Yes" to line 20a, did the organization attach its audited financial statements to this return? Note. Some Form 990 filers that operate one or more hospitals must attach audited financial statements (see instructions)		
20b			

OPEN YOUR HEART TO THE HUNGRY AND HOMELESS

Part IV Checklist of Required Schedules (continued)

	Yes	No
21 Did the organization report more than \$5,000 of grants and other assistance to governments and organizations in the United States on Part IX, column (A), line 1? <i>If "Yes," complete Schedule I, Parts I and II</i>	X	
22 Did the organization report more than \$5,000 of grants and other assistance to individuals in the United States on Part IX, column (A), line 2? <i>If "Yes," complete Schedule I, Parts I and III</i>		X
23 Did the organization answer "Yes" to Part VII, Section A, line 3, 4, or 5 about compensation of the organization's current and former officers, directors, trustees, key employees, and highest compensated employees? <i>If "Yes," complete Schedule J</i>		X
24a Did the organization have a tax-exempt bond issue with an outstanding principal amount of more than \$100,000 as of the last day of the year, that was issued after December 31, 2002? <i>If "Yes," answer lines 24b through 24d and complete Schedule K. If "No," go to line 25</i>		X
b Did the organization invest any proceeds of tax-exempt bonds beyond a temporary period exception?		
c Did the organization maintain an escrow account other than a refunding escrow at any time during the year to defease any tax-exempt bonds?		
d Did the organization act as an "on behalf of" issuer for bonds outstanding at any time during the year?		
25a Section 501(c)(3) and 501(c)(4) organizations. Did the organization engage in an excess benefit transaction with a disqualified person during the year? <i>If "Yes," complete Schedule L, Part I</i>		X
b Is the organization aware that it engaged in an excess benefit transaction with a disqualified person in a prior year, and that the transaction has not been reported on any of the organization's prior Forms 990 or 990-EZ? <i>If "Yes," complete Schedule L, Part I</i>		X
26 Was a loan to or by a current or former officer, director, trustee, key employee, highly compensated employee, or disqualified person outstanding as of the end of the organization's tax year? <i>If "Yes," complete Schedule L, Part II</i>		X
27 Did the organization provide a grant or other assistance to an officer, director, trustee, key employee, substantial contributor, or a grant selection committee member, or to a person related to such an individual? <i>If "Yes," complete Schedule L, Part III</i>		X
28 Was the organization a party to a business transaction with one of the following parties (see Schedule L, Part IV instructions for applicable filing thresholds, conditions, and exceptions):		
a A current or former officer, director, trustee, or key employee? <i>If "Yes," complete Schedule L, Part IV</i>		X
b A family member of a current or former officer, director, trustee, or key employee? <i>If "Yes," complete Schedule L, Part IV</i>		X
c An entity of which a current or former officer, director, trustee, or key employee (or a family member thereof) was an officer, director, trustee, or direct or indirect owner? <i>If "Yes," complete Schedule L, Part IV</i>		X
29 Did the organization receive more than \$25,000 in non-cash contributions? <i>If "Yes," complete Schedule M</i>		X
30 Did the organization receive contributions of art, historical treasures, or other similar assets, or qualified conservation contributions? <i>If "Yes," complete Schedule M</i>		X
31 Did the organization liquidate, terminate, or dissolve and cease operations? <i>If "Yes," complete Schedule N, Part I</i>		X
32 Did the organization sell, exchange, dispose of, or transfer more than 25% of its net assets? <i>If "Yes," complete Schedule N, Part II</i>		X
33 Did the organization own 100% of an entity disregarded as separate from the organization under Regulations sections 301.7701-2 and 301.7701-3? <i>If "Yes," complete Schedule R, Part I</i>		X
34 Was the organization related to any tax-exempt or taxable entity? <i>If "Yes," complete Schedule R, Parts II, III, IV, and V, line 1</i>		X
35 Is any related organization a controlled entity within the meaning of section 512(b)(13)?		X
a Did the organization receive any payment from or engage in any transaction with a controlled entity within the meaning of section 512(b)(13)? <i>If "Yes," complete Schedule R, Part V, line 2</i> <input type="checkbox"/> Yes <input checked="" type="checkbox"/> No		
36 Section 501(c)(3) organizations. Did the organization make any transfers to an exempt non-charitable related organization? <i>If "Yes," complete Schedule R, Part V, line 2</i>		X
37 Did the organization conduct more than 5% of its activities through an entity that is not a related organization and that is treated as a partnership for federal income tax purposes? <i>If "Yes," complete Schedule R, Part VI</i>		X
38 Did the organization complete Schedule O and provide explanations in Schedule O for Part VI, lines 11 and 19? Note. All Form 990 filers are required to complete Schedule O	X	

Part V Statements Regarding Other IRS Filings and Tax Compliance

Check if Schedule O contains a response to any question in this Part V

		Yes	No
1a	Enter the number reported in Box 3 of Form 1096. Enter -0- if not applicable		
	1a 0		
b	Enter the number of Forms W-2G included in line 1a. Enter -0- if not applicable		
	1b 0		
c	Did the organization comply with backup withholding rules for reportable payments to vendors and reportable gaming (gambling) winnings to prize winners?		
	1c		
2a	Enter the number of employees reported on Form W-3, Transmittal of Wage and Tax Statements, filed for the calendar year ending with or within the year covered by this return		
	2a 4		
b	If at least one is reported on line 2a, did the organization file all required federal employment tax returns? Note. If the sum of lines 1a and 2a is greater than 250, you may be required to e-file. (see instructions)	X	
3a	Did the organization have unrelated business gross income of \$1,000 or more during the year?		X
b	If "Yes," has it filed a Form 990-T for this year? If "No," provide an explanation in Schedule O		
	3b		
4a	At any time during the calendar year, did the organization have an interest in, or a signature or other authority over, a financial account in a foreign country (such as a bank account, securities account, or other financial account)?		X
b	If "Yes," enter the name of the foreign country: _____ See instructions for filing requirements for Form TD F 90-22.1, Report of Foreign Bank and Financial Accounts.		
5a	Was the organization a party to a prohibited tax shelter transaction at any time during the tax year?		X
b	Did any taxable party notify the organization that it was or is a party to a prohibited tax shelter transaction?		X
c	If "Yes," to line 5a or 5b, did the organization file Form 8886-T?		
	5c		
6a	Does the organization have annual gross receipts that are normally greater than \$100,000, and did the organization solicit any contributions that were not tax deductible?		X
b	If "Yes," did the organization include with every solicitation an express statement that such contributions or gifts were not tax deductible?		
	6b		
7	Organizations that may receive deductible contributions under section 170(c).		
a	Did the organization receive a payment in excess of \$75 made partly as a contribution and partly for goods and services provided to the payor?		X
b	If "Yes," did the organization notify the donor of the value of the goods or services provided?		
c	Did the organization sell, exchange, or otherwise dispose of tangible personal property for which it was required to file Form 8282?		X
d	If "Yes," indicate the number of Forms 8282 filed during the year		
	7d		
e	Did the organization receive any funds, directly or indirectly, to pay premiums on a personal benefit contract?		
f	Did the organization, during the year, pay premiums, directly or indirectly, on a personal benefit contract?		
g	If the organization received a contribution of qualified intellectual property, did the organization file Form 8899 as required?		
h	If the organization received a contribution of cars, boats, airplanes, or other vehicles, did the organization file a Form 1098-C?		
	7e		
	7f		
	7g		
	7h		
8	Sponsoring organizations maintaining donor advised funds and section 509(a)(3) supporting organizations. Did the supporting organization, or a donor advised fund maintained by a sponsoring organization, have excess business holdings at any time during the year?		
	8		
9	Sponsoring organizations maintaining donor advised funds.		
a	Did the organization make any taxable distributions under section 4966?		
b	Did the organization make a distribution to a donor, donor advisor, or related person?		
	9a		
	9b		
10	Section 501(c)(7) organizations. Enter:		
a	Initiation fees and capital contributions included on Part VIII, line 12	10a	
b	Gross receipts, included on Form 990, Part VIII, line 12, for public use of club facilities	10b	
11	Section 501(c)(12) organizations. Enter:		
a	Gross income from members or shareholders	11a	
b	Gross income from other sources (Do not net amounts due or paid to other sources against amounts due or received from them.)	11b	
12a	Section 4947(a)(1) non-exempt charitable trusts. Is the organization filing Form 990 in lieu of Form 1041?	12a	
b	If "Yes," enter the amount of tax-exempt interest received or accrued during the year	12b	
13	Section 501(c)(29) qualified nonprofit health insurance issuers.		
a	Is the organization licensed to issue qualified health plans in more than one state? Note. See the instructions for additional information the organization must report on Schedule O.	13a	
b	Enter the amount of reserves the organization is required to maintain by the states in which the organization is licensed to issue qualified health plans	13b	
c	Enter the amount of reserves on hand	13c	
14a	Did the organization receive any payments for indoor tanning services during the tax year?	14a	X
b	If "Yes," has it filed a Form 720 to report these payments? If "No," provide an explanation in Schedule O	14b	

Part VI Governance, Management, and Disclosure For each "Yes" response to lines 2 through 7b below, and for a "No" response to line 8a, 8b, or 10b below, describe the circumstances, processes, or changes in Schedule O. See instructions.

Check if Schedule O contains a response to any question in this Part VI

Section A. Governing Body and Management

		Yes	No
1a	Enter the number of voting members of the governing body at the end of the tax year		
1b	Enter the number of voting members included in line 1a, above, who are independent		
2	Did any officer, director, trustee, or key employee have a family relationship or a business relationship with any other officer, director, trustee, or key employee?		X
3	Did the organization delegate control over management duties customarily performed by or under the direct supervision of officers, directors or trustees, or key employees to a management company or other person?		X
4	Did the organization make any significant changes to its governing documents since the prior Form 990 was filed?		X
5	Did the organization become aware during the year of a significant diversion of the organization's assets?		X
6	Does the organization have members or stockholders?		X
7a	Does the organization have members, stockholders, or other persons who may elect one or more members of the governing body?		X
7b	Are any decisions of the governing body subject to approval by members, stockholders, or other persons?		X
8	Did the organization contemporaneously document the meetings held or written actions undertaken during the year by the following:		
8a	The governing body?	X	
8b	Each committee with authority to act on behalf of the governing body?	X	
9	Is there any officer, director, trustee, or key employee listed in Part VII, Section A, who cannot be reached at the organization's mailing address? If "Yes," provide the names and addresses in Schedule O		X

Section B. Policies (This Section B requests information about policies not required by the Internal Revenue Code.)

		Yes	No
10a	Does the organization have local chapters, branches, or affiliates?		X
10b	If "Yes," does the organization have written policies and procedures governing the activities of such chapters, affiliates, and branches to ensure their operations are consistent with those of the organization?		
11a	Has the organization provided a copy of this Form 990 to all members of its governing body before filing the form?	X	
11b	Describe in Schedule O the process, if any, used by the organization to review this Form 990.		
12a	Does the organization have a written conflict of interest policy? If "No," go to line 13	X	
12b	Are officers, directors or trustees, and key employees required to disclose annually interests that could give rise to conflicts?	X	
12c	Does the organization regularly and consistently monitor and enforce compliance with the policy? If "Yes," describe in Schedule O how this is done	X	
13	Does the organization have a written whistleblower policy?	X	
14	Does the organization have a written document retention and destruction policy?	X	
15	Did the process for determining compensation of the following persons include a review and approval by independent persons, comparability data, and contemporaneous substantiation of the deliberation and decision?		
15a	The organization's CEO, Executive Director, or top management official		X
15b	Other officers or key employees of the organization		X
16a	Did the organization invest in, contribute assets to, or participate in a joint venture or similar arrangement with a taxable entity during the year?		X
16b	If "Yes," has the organization adopted a written policy or procedure requiring the organization to evaluate its participation in joint venture arrangements under applicable federal tax law, and taken steps to safeguard the organization's exempt status with respect to such arrangements?		

Section C. Disclosure

- 17** List the states with which a copy of this Form 990 is required to be filed **MN**
- 18** Section 6104 requires an organization to make its Forms 1023 (or 1024 if applicable), 990, and 990-T (501(c)(3)s only) available for public inspection. Indicate how you make these available. Check all that apply.
 Own website Another's website Upon request
- 19** Describe in Schedule O whether (and if so, how), the organization makes its governing documents, conflict of interest policy, and financial statements available to the public.
- 20** State the name, physical address, and telephone number of the person who possesses the books and records of the organization: **THE ORGANIZATION - 651-224-8011**
121 EAST 7TH PLACE, NO. 110, ST PAUL, MN 55101-0706

Part VII Compensation of Officers, Directors, Trustees, Key Employees, Highest Compensated Employees, and Independent Contractors

Check if Schedule O contains a response to any question in this Part VII

Section A. Officers, Directors, Trustees, Key Employees, and Highest Compensated Employees

1a Complete this table for all persons required to be listed. Report compensation for the calendar year ending with or within the organization's tax year.

- List all of the organization's **current** officers, directors, trustees (whether individuals or organizations), regardless of amount of compensation. Enter -0- in columns (D), (E), and (F) if no compensation was paid.
- List all of the organization's **current** key employees, if any. See instructions for definition of "key employee."
- List the organization's five **current** highest compensated employees (other than an officer, director, trustee, or key employee) who received reportable compensation (Box 5 of Form W-2 and/or Box 7 of Form 1099-MISC) of more than \$100,000 from the organization and any related organizations.
- List all of the organization's **former** officers, key employees, and highest compensated employees who received more than \$100,000 of reportable compensation from the organization and any related organizations.
- List all of the organization's **former directors or trustees** that received, in the capacity as a former director or trustee of the organization, more than \$10,000 of reportable compensation from the organization and any related organizations.

List persons in the following order: individual trustees or directors; institutional trustees; officers; key employees; highest compensated employees; and former such persons.

Check this box if neither the organization nor any related organization compensated any current officer, director, or trustee.

(A) Name and Title	(B) Average hours per week (describe hours for related organizations in Schedule O)	(C) Position (check all that apply)						(D) Reportable compensation from the organization (W-2/1099-MISC)	(E) Reportable compensation from related organizations (W-2/1099-MISC)	(F) Estimated amount of other compensation from the organization and related organizations
		Individual trustee or director	Institutional trustee	Officer	Key employee	Highest compensated employee	Former			
YOJI SHIMIZU PRESIDENT	2.00	X		X				0.	0.	0.
JULIE BURKHARDT DIRECTOR	1.00	X						0.	0.	0.
SHANNAH MOORE MULVIHILL VICE PRESIDENT	2.00	X		X				0.	0.	0.
ROGER HENRY DIRECTOR	1.00	X						0.	0.	0.
SUSAN CONLEY FENTON DIRECTOR	1.00	X						0.	0.	0.
MAUREEN FLANAGAN SECRETARY	2.00	X		X				0.	0.	0.
CHRISTINA GIESE DIRECTOR	1.00	X						0.	0.	0.
PAUL GIFFORD DIRECTOR	1.00	X						0.	0.	0.
CARY P CUNNINGHAM DIRECTOR	1.00	X						0.	0.	0.
DANIEL DUHAMEL DIRECTOR	1.00	X						0.	0.	0.
MARK KASZYNSKI DIRECTOR	1.00	X						0.	0.	0.
ANDREW KLEIN DIRECTOR	1.00	X						0.	0.	0.
MATT PELLOWSKI DIRECTOR	1.00	X						0.	0.	0.
JODI SCHOH TREASURER	2.00	X		X				0.	0.	0.
DOUG GOLDEN DIRECTOR	1.00	X						0.	0.	0.
HUGH JUERGENS DIRECTOR	1.00	X						0.	0.	0.
JEFF ZIBLEY DIRECTOR	1.00	X						0.	0.	0.

OPEN YOUR HEART TO THE HUNGRY AND HOMELESS

Part VII Section A. Officers, Directors, Trustees, Key Employees, and Highest Compensated Employees (continued)

(A) Name and title	(B) Average hours per week (describe hours for related organizations in Schedule O)	(C) Position (check all that apply)						(D) Reportable compensation from the organization (W-2/1099-MISC)	(E) Reportable compensation from related organizations (W-2/1099-MISC)	(F) Estimated amount of other compensation from the organization and related organizations
		Individual trustee or director	Institutional trustee	Officer	Key employee	Highest compensated employee	Former			
ARNA YETTER EXECUTIVE DIRECTOR	30.00				X	X		52,102.	0.	1,563.
1b Sub-total								52,102.	0.	1,563.
c Total from continuation sheets to Part VII, Section A								0.	0.	0.
d Total (add lines 1b and 1c)								52,102.	0.	1,563.

2 Total number of individuals (including but not limited to those listed above) who received more than \$100,000 in reportable compensation from the organization **0**

	Yes	No
3 Did the organization list any former officer, director or trustee, key employee, or highest compensated employee on line 1a? <i>If "Yes," complete Schedule J for such individual</i>		X
4 For any individual listed on line 1a, is the sum of reportable compensation and other compensation from the organization and related organizations greater than \$150,000? <i>If "Yes," complete Schedule J for such individual</i>		X
5 Did any person listed on line 1a receive or accrue compensation from any unrelated organization or individual for services rendered to the organization? <i>If "Yes," complete Schedule J for such person</i>		X

Section B. Independent Contractors

1 Complete this table for your five highest compensated independent contractors that received more than \$100,000 of compensation from the organization. **NONE**

(A) Name and business address	(B) Description of services	(C) Compensation

2 Total number of independent contractors (including but not limited to those listed above) who received more than \$100,000 in compensation from the organization **0**

OPEN YOUR HEART TO THE HUNGRY AND HOMELESS

Form 990 (2010)

36-3488089 Page 9

Part VIII Statement of Revenue

			(A) Total revenue	(B) Related or exempt function revenue	(C) Unrelated business revenue	(D) Revenue excluded from tax under sections 512, 513, or 514		
Contributions, gifts, grants and other similar amounts	1 a	Federated campaigns	1a					
	b	Membership dues	1b					
	c	Fundraising events	1c					
	d	Related organizations	1d					
	e	Government grants (contributions)	1e					
	f	All other contributions, gifts, grants, and similar amounts not included above	1f	959,836.				
	g	Noncash contributions included in lines 1a-1f: \$						
	h	Total. Add lines 1a-1f		959,836.				
	Program Service Revenue	2 a		Business Code				
b								
c								
d								
e								
f		All other program service revenue						
g		Total. Add lines 2a-2f						
Other Revenue	3	Investment income (including dividends, interest, and other similar amounts)		732.			732.	
	4	Income from investment of tax-exempt bond proceeds						
	5	Royalties						
	6 a	Gross Rents	(i) Real	(ii) Personal				
		Less: rental expenses						
		Rental income or (loss)						
		Net rental income or (loss)						
	7 a	Gross amount from sales of assets other than inventory	(i) Securities	(ii) Other				
		Less: cost or other basis and sales expenses						
		Gain or (loss)						
		Net gain or (loss)						
	8 a	Gross income from fundraising events (not including \$ _____ of contributions reported on line 1c). See Part IV, line 18	a					
		Less: direct expenses	b					
		Net income or (loss) from fundraising events						
	9 a	Gross income from gaming activities. See Part IV, line 19	a					
Less: direct expenses		b						
Net income or (loss) from gaming activities								
10 a	Gross sales of inventory, less returns and allowances	a						
	Less: cost of goods sold	b						
	Net income or (loss) from sales of inventory							
Miscellaneous Revenue			Business Code					
11 a	REFUND PRIOR YEAR GRAN	900099	9,285.	9,285.				
b								
c								
d	All other revenue							
e	Total. Add lines 11a-11d		9,285.					
12	Total revenue. See instructions.		969,853.	9,285.	0.	732.		

**OPEN YOUR HEART TO THE HUNGRY AND
HOMELESS**

Part IX Statement of Functional Expenses

*Section 501(c)(3) and 501(c)(4) organizations must complete all columns.
All other organizations must complete column (A) but are not required to complete columns (B), (C), and (D).*

Do not include amounts reported on lines 6b, 7b, 8b, 9b, and 10b of Part VIII.	(A) Total expenses	(B) Program service expenses	(C) Management and general expenses	(D) Fundraising expenses
1 Grants and other assistance to governments and organizations in the U.S. See Part IV, line 21	788,426.	788,426.		
2 Grants and other assistance to individuals in the U.S. See Part IV, line 22				
3 Grants and other assistance to governments, organizations, and individuals outside the U.S. See Part IV, lines 15 and 16				
4 Benefits paid to or for members				
5 Compensation of current officers, directors, trustees, and key employees	53,575.	18,215.	12,322.	23,038.
6 Compensation not included above, to disqualified persons (as defined under section 4958(f)(1)) and persons described in section 4958(c)(3)(B)				
7 Other salaries and wages	62,963.	21,407.	14,481.	27,075.
8 Pension plan contributions (include section 401(k) and section 403(b) employer contributions)	1,683.	574.	388.	721.
9 Other employee benefits				
10 Payroll taxes	9,719.	3,304.	2,235.	4,180.
11 Fees for services (non-employees):				
a Management				
b Legal				
c Accounting	8,218.		8,218.	
d Lobbying				
e Professional fundraising services. See Part IV, line 17				
f Investment management fees				
g Other	17,422.	17,422.		
12 Advertising and promotion				
13 Office expenses	3,491.	1,745.	873.	873.
14 Information technology				
15 Royalties				
16 Occupancy	10,957.	3,725.	2,520.	4,712.
17 Travel	2,213.	752.	487.	974.
18 Payments of travel or entertainment expenses for any federal, state, or local public officials				
19 Conferences, conventions, and meetings				
20 Interest				
21 Payments to affiliates				
22 Depreciation, depletion, and amortization	148.	25.	37.	86.
23 Insurance	2,476.	842.	569.	1,065.
24 Other expenses. Itemize expenses not covered above. (List miscellaneous expenses in line 24f. If line 24f amount exceeds 10% of line 25, column (A) amount, list line 24f expenses on Schedule O.)				
a PRINTING, PUBLICATIONS	5,214.	3,226.	693.	1,295.
b CAMPAIGN EXPENSE	3,621.			3,621.
c TELEPHONE	1,660.	564.	382.	714.
d				
e				
f All other expenses	1,843.	479.	542.	822.
25 Total functional expenses. Add lines 1 through 24f	973,629.	860,706.	43,747.	69,176.
26 Joint costs. Check here <input type="checkbox"/> if following SOP 98-2 (ASC 958-720). Complete this line only if the organization reported in column (B) joint costs from a combined educational campaign and fundraising solicitation				

OPEN YOUR HEART TO THE HUNGRY AND
HOMELESS

Part X Balance Sheet

		(A) Beginning of year		(B) End of year	
Assets	1 Cash - non-interest-bearing		1		151,857.
	2 Savings and temporary cash investments	192,302.	2		50,950.
	3 Pledges and grants receivable, net	822,352.	3		808,284.
	4 Accounts receivable, net		4		
	5 Receivables from current and former officers, directors, trustees, key employees, and highest compensated employees. Complete Part II of Schedule L		5		
	6 Receivables from other disqualified persons (as defined under section 4958(f)(1)), persons described in section 4958(c)(3)(B), and contributing employers and sponsoring organizations of section 501(c)(9) voluntary employees' beneficiary organizations (see instructions)		6		
	7 Notes and loans receivable, net		7		
	8 Inventories for sale or use		8		
	9 Prepaid expenses and deferred charges	2,306.	9		987.
	10a Land, buildings, and equipment: cost or other basis. Complete Part VI of Schedule D	10a 6,317.			
	b Less: accumulated depreciation	10b 5,946.	519.	10c	371.
	11 Investments - publicly traded securities		11		
	12 Investments - other securities. See Part IV, line 11		12		
	13 Investments - program-related. See Part IV, line 11		13		
	14 Intangible assets		14		
	15 Other assets. See Part IV, line 11		15		
16 Total assets. Add lines 1 through 15 (must equal line 34)	1,017,479.	16		1,012,449.	
Liabilities	17 Accounts payable and accrued expenses	7,711.	17		5,925.
	18 Grants payable	77,794.	18		78,326.
	19 Deferred revenue		19		
	20 Tax-exempt bond liabilities		20		
	21 Escrow or custodial account liability. Complete Part IV of Schedule D		21		
	22 Payables to current and former officers, directors, trustees, key employees, highest compensated employees, and disqualified persons. Complete Part II of Schedule L		22		
	23 Secured mortgages and notes payable to unrelated third parties		23		
	24 Unsecured notes and loans payable to unrelated third parties		24		
	25 Other liabilities. Complete Part X of Schedule D		25		
	26 Total liabilities. Add lines 17 through 25	85,505.	26		84,251.
Net Assets or Fund Balances	Organizations that follow SFAS 117, check here <input checked="" type="checkbox"/> and complete lines 27 through 29, and lines 33 and 34.				
	27 Unrestricted net assets	114,567.	27		125,756.
	28 Temporarily restricted net assets	817,407.	28		802,442.
	29 Permanently restricted net assets		29		
	Organizations that do not follow SFAS 117, check here <input type="checkbox"/> and complete lines 30 through 34.				
	30 Capital stock or trust principal, or current funds		30		
	31 Paid-in or capital surplus, or land, building, or equipment fund		31		
	32 Retained earnings, endowment, accumulated income, or other funds		32		
	33 Total net assets or fund balances	931,974.	33		928,198.
34 Total liabilities and net assets/fund balances	1,017,479.	34		1,012,449.	

Part XI Reconciliation of Net Assets

Check if Schedule O contains a response to any question in this Part XI

1	Total revenue (must equal Part VIII, column (A), line 12)	1	969,853.
2	Total expenses (must equal Part IX, column (A), line 25)	2	973,629.
3	Revenue less expenses. Subtract line 2 from line 1	3	-3,776.
4	Net assets or fund balances at beginning of year (must equal Part X, line 33, column (A))	4	931,974.
5	Other changes in net assets or fund balances (explain in Schedule O)	5	
6	Net assets or fund balances at end of year. Combine lines 3, 4, and 5 (must equal Part X, line 33, column (B))	6	928,198.

Part XII Financial Statements and Reporting

Check if Schedule O contains a response to any question in this Part XII

		Yes	No
1	Accounting method used to prepare the Form 990: <input type="checkbox"/> Cash <input checked="" type="checkbox"/> Accrual <input type="checkbox"/> Other _____ If the organization changed its method of accounting from a prior year or checked "Other," explain in Schedule O.		
2a	Were the organization's financial statements compiled or reviewed by an independent accountant?		X
2b	Were the organization's financial statements audited by an independent accountant?	X	
2c	If "Yes" to line 2a or 2b, does the organization have a committee that assumes responsibility for oversight of the audit, review, or compilation of its financial statements and selection of an independent accountant? If the organization changed either its oversight process or selection process during the tax year, explain in Schedule O.	X	
d	If "Yes" to line 2a or 2b, check a box below to indicate whether the financial statements for the year were issued on a separate basis, consolidated basis, or both: <input type="checkbox"/> Separate basis <input checked="" type="checkbox"/> Consolidated basis <input type="checkbox"/> Both consolidated and separate basis		
3a	As a result of a federal award, was the organization required to undergo an audit or audits as set forth in the Single Audit Act and OMB Circular A-133?		X
3b	If "Yes," did the organization undergo the required audit or audits? If the organization did not undergo the required audit or audits, explain why in Schedule O and describe any steps taken to undergo such audits.		

SCHEDULE A
(Form 990 or 990-EZ)

Department of the Treasury
Internal Revenue Service

Public Charity Status and Public Support

Complete if the organization is a section 501(c)(3) organization or a section 4947(a)(1) nonexempt charitable trust.

▶ Attach to Form 990 or Form 990-EZ. ▶ See separate instructions.

OMB No. 1545-0047

2010

Open to Public Inspection

Name of the organization **OPEN YOUR HEART TO THE HUNGRY AND HOMELESS** Employer identification number **36-3488089**

Part I Reason for Public Charity Status (All organizations must complete this part.) See instructions.

The organization is not a private foundation because it is: (For lines 1 through 11, check only one box.)

- 1 A church, convention of churches, or association of churches described in **section 170(b)(1)(A)(i).**
- 2 A school described in **section 170(b)(1)(A)(ii).** (Attach Schedule E.)
- 3 A hospital or a cooperative hospital service organization described in **section 170(b)(1)(A)(iii).**
- 4 A medical research organization operated in conjunction with a hospital described in **section 170(b)(1)(A)(iii).** Enter the hospital's name, city, and state: _____
- 5 An organization operated for the benefit of a college or university owned or operated by a governmental unit described in **section 170(b)(1)(A)(iv).** (Complete Part II.)
- 6 A federal, state, or local government or governmental unit described in **section 170(b)(1)(A)(v).**
- 7 An organization that normally receives a substantial part of its support from a governmental unit or from the general public described in **section 170(b)(1)(A)(vi).** (Complete Part II.)
- 8 A community trust described in **section 170(b)(1)(A)(vi).** (Complete Part II.)
- 9 An organization that normally receives: (1) more than 33 1/3% of its support from contributions, membership fees, and gross receipts from activities related to its exempt functions - subject to certain exceptions, and (2) no more than 33 1/3% of its support from gross investment income and unrelated business taxable income (less section 511 tax) from businesses acquired by the organization after June 30, 1975. See **section 509(a)(2).** (Complete Part III.)
- 10 An organization organized and operated exclusively to test for public safety. See **section 509(a)(4).**
- 11 An organization organized and operated exclusively for the benefit of, to perform the functions of, or to carry out the purposes of one or more publicly supported organizations described in section 509(a)(1) or section 509(a)(2). See **section 509(a)(3).** Check the box that describes the type of supporting organization and complete lines 11e through 11h.
 - a Type I b Type II c Type III - Functionally integrated d Type III - Other
- e By checking this box, I certify that the organization is not controlled directly or indirectly by one or more disqualified persons other than foundation managers and other than one or more publicly supported organizations described in section 509(a)(1) or section 509(a)(2).
- f If the organization received a written determination from the IRS that it is a Type I, Type II, or Type III supporting organization, check this box
- g Since August 17, 2006, has the organization accepted any gift or contribution from any of the following persons?

	Yes	No
(i) A person who directly or indirectly controls, either alone or together with persons described in (ii) and (iii) below, the governing body of the supported organization?	11g(i)	
(ii) A family member of a person described in (i) above?	11g(ii)	
(iii) A 35% controlled entity of a person described in (i) or (ii) above?	11g(iii)	
- h Provide the following information about the supported organization(s).

(i) Name of supported organization	(ii) EIN	(iii) Type of organization (described on lines 1-9 above or IRC section (see instructions))	(iv) Is the organization in col. (i) listed in your governing document?		(v) Did you notify the organization in col. (i) of your support?		(vi) Is the organization in col. (i) organized in the U.S.?		(vii) Amount of support
			Yes	No	Yes	No	Yes	No	
Total									

Part II Support Schedule for Organizations Described in Sections 170(b)(1)(A)(iv) and 170(b)(1)(A)(vi)

(Complete only if you checked the box on line 5, 7, or 8 of Part I or if the organization failed to qualify under Part III. If the organization fails to qualify under the tests listed below, please complete Part III.)

Section A. Public Support

Calendar year (or fiscal year beginning in) ▶	(a) 2006	(b) 2007	(c) 2008	(d) 2009	(e) 2010	(f) Total
1 Gifts, grants, contributions, and membership fees received. (Do not include any "unusual grants.")	763,156.	809,598.	967,390.	905,954.	959,836.	4405934.
2 Tax revenues levied for the organization's benefit and either paid to or expended on its behalf						
3 The value of services or facilities furnished by a governmental unit to the organization without charge						
4 Total. Add lines 1 through 3	763,156.	809,598.	967,390.	905,954.	959,836.	4405934.
5 The portion of total contributions by each person (other than a governmental unit or publicly supported organization) included on line 1 that exceeds 2% of the amount shown on line 11, column (f)						
6 Public support. Subtract line 5 from line 4.						4405934.

Section B. Total Support

Calendar year (or fiscal year beginning in) ▶	(a) 2006	(b) 2007	(c) 2008	(d) 2009	(e) 2010	(f) Total
7 Amounts from line 4	763,156.	809,598.	967,390.	905,954.	959,836.	4405934.
8 Gross income from interest, dividends, payments received on securities loans, rents, royalties and income from similar sources	1,163.	3,667.	3,692.	852.	732.	10,106.
9 Net income from unrelated business activities, whether or not the business is regularly carried on						
10 Other income. Do not include gain or loss from the sale of capital assets (Explain in Part IV.)		10,735.	10,235.	2,876.	9,285.	33,131.
11 Total support. Add lines 7 through 10						4449171.
12 Gross receipts from related activities, etc. (see instructions)					12	
13 First five years. If the Form 990 is for the organization's first, second, third, fourth, or fifth tax year as a section 501(c)(3) organization, check this box and stop here						<input type="checkbox"/>

Section C. Computation of Public Support Percentage

14 Public support percentage for 2010 (line 6, column (f) divided by line 11, column (f))	14	99.03	%
15 Public support percentage from 2009 Schedule A, Part II, line 14	15	99.19	%
16a 33 1/3% support test - 2010. If the organization did not check the box on line 13, and line 14 is 33 1/3% or more, check this box and stop here. The organization qualifies as a publicly supported organization	<input checked="" type="checkbox"/>		
b 33 1/3% support test - 2009. If the organization did not check a box on line 13 or 16a, and line 15 is 33 1/3% or more, check this box and stop here. The organization qualifies as a publicly supported organization	<input type="checkbox"/>		
17a 10% -facts-and-circumstances test - 2010. If the organization did not check a box on line 13, 16a, or 16b, and line 14 is 10% or more, and if the organization meets the "facts-and-circumstances" test, check this box and stop here. Explain in Part IV how the organization meets the "facts-and-circumstances" test. The organization qualifies as a publicly supported organization	<input type="checkbox"/>		
b 10% -facts-and-circumstances test - 2009. If the organization did not check a box on line 13, 16a, 16b, or 17a, and line 15 is 10% or more, and if the organization meets the "facts-and-circumstances" test, check this box and stop here. Explain in Part IV how the organization meets the "facts-and-circumstances" test. The organization qualifies as a publicly supported organization	<input type="checkbox"/>		
18 Private foundation. If the organization did not check a box on line 13, 16a, 16b, 17a, or 17b, check this box and see instructions	<input type="checkbox"/>		

Part III Support Schedule for Organizations Described in Section 509(a)(2)

(Complete only if you checked the box on line 9 of Part I or if the organization failed to qualify under Part II. If the organization fails to qualify under the tests listed below, please complete Part II.)

Section A. Public Support

Calendar year (or fiscal year beginning in) ▶	(a) 2006	(b) 2007	(c) 2008	(d) 2009	(e) 2010	(f) Total
1 Gifts, grants, contributions, and membership fees received. (Do not include any "unusual grants.")						
2 Gross receipts from admissions, merchandise sold or services performed, or facilities furnished in any activity that is related to the organization's tax-exempt purpose						
3 Gross receipts from activities that are not an unrelated trade or business under section 513						
4 Tax revenues levied for the organization's benefit and either paid to or expended on its behalf						
5 The value of services or facilities furnished by a governmental unit to the organization without charge						
6 Total. Add lines 1 through 5						
7a Amounts included on lines 1, 2, and 3 received from disqualified persons						
b Amounts included on lines 2 and 3 received from other than disqualified persons that exceed the greater of \$5,000 or 1% of the amount on line 13 for the year						
c Add lines 7a and 7b						
8 Public support (Subtract line 7c from line 6.)						

Section B. Total Support

Calendar year (or fiscal year beginning in) ▶	(a) 2006	(b) 2007	(c) 2008	(d) 2009	(e) 2010	(f) Total
9 Amounts from line 6						
10a Gross income from interest, dividends, payments received on securities loans, rents, royalties and income from similar sources						
b Unrelated business taxable income (less section 511 taxes) from businesses acquired after June 30, 1975						
c Add lines 10a and 10b						
11 Net income from unrelated business activities not included in line 10b, whether or not the business is regularly carried on						
12 Other income. Do not include gain or loss from the sale of capital assets (Explain in Part IV.)						
13 Total support (Add lines 9, 10c, 11, and 12.)						

14 First five years. If the Form 990 is for the organization's first, second, third, fourth, or fifth tax year as a section 501(c)(3) organization, check this box and **stop here**

Section C. Computation of Public Support Percentage

15 Public support percentage for 2010 (line 8, column (f) divided by line 13, column (f))	15		%
16 Public support percentage from 2009 Schedule A, Part III, line 15	16		%

Section D. Computation of Investment Income Percentage

17 Investment income percentage for 2010 (line 10c, column (f) divided by line 13, column (f))	17		%
18 Investment income percentage from 2009 Schedule A, Part III, line 17	18		%

19a 33 1/3% support tests - 2010. If the organization did not check the box on line 14, and line 15 is more than 33 1/3%, and line 17 is not more than 33 1/3%, check this box and **stop here**. The organization qualifies as a publicly supported organization

b 33 1/3% support tests - 2009. If the organization did not check a box on line 14 or line 19a, and line 16 is more than 33 1/3%, and line 18 is not more than 33 1/3%, check this box and **stop here**. The organization qualifies as a publicly supported organization

20 Private foundation. If the organization did not check a box on line 14, 19a, or 19b, check this box and see instructions

Schedule B
(Form 990, 990-EZ,
or 990-PF)

Department of the Treasury
Internal Revenue Service

Schedule of Contributors

▶ Attach to Form 990, 990-EZ, or 990-PF.

OMB No. 1545-0047

2010

Name of the organization

OPEN YOUR HEART TO THE HUNGRY AND
HOMELESS

Employer identification number

36-3488089

Organization type (check one):

Filers of:

Section:

Form 990 or 990-EZ

501(c)(3) (enter number) organization

4947(a)(1) nonexempt charitable trust **not** treated as a private foundation

527 political organization

Form 990-PF

501(c)(3) exempt private foundation

4947(a)(1) nonexempt charitable trust treated as a private foundation

501(c)(3) taxable private foundation

Check if your organization is covered by the **General Rule** or a **Special Rule**.

Note. Only a section 501(c)(7), (8), or (10) organization can check boxes for both the General Rule and a Special Rule. See instructions.

General Rule

For an organization filing Form 990, 990-EZ, or 990-PF that received, during the year, \$5,000 or more (in money or property) from any one contributor. Complete Parts I and II.

Special Rules

For a section 501(c)(3) organization filing Form 990 or 990-EZ that met the 33 1/3% support test of the regulations under sections 509(a)(1) and 170(b)(1)(A)(vi), and received from any one contributor, during the year, a contribution of the greater of **(1)** \$5,000 or **(2)** 2% of the amount on (i) Form 990, Part VIII, line 1h or (ii) Form 990-EZ, line 1. Complete Parts I and II.

For a section 501(c)(7), (8), or (10) organization filing Form 990 or 990-EZ that received from any one contributor, during the year, aggregate contributions of more than \$1,000 for use *exclusively* for religious, charitable, scientific, literary, or educational purposes, or the prevention of cruelty to children or animals. Complete Parts I, II, and III.

For a section 501(c)(7), (8), or (10) organization filing Form 990 or 990-EZ that received from any one contributor, during the year, contributions for use *exclusively* for religious, charitable, etc., purposes, but these contributions did not aggregate to more than \$1,000. If this box is checked, enter here the total contributions that were received during the year for an *exclusively* religious, charitable, etc., purpose. Do not complete any of the parts unless the **General Rule** applies to this organization because it received nonexclusively religious, charitable, etc., contributions of \$5,000 or more during the year. ▶ \$ _____

Caution. An organization that is not covered by the General Rule and/or the Special Rules does not file Schedule B (Form 990, 990-EZ, or 990-PF), but it **must** answer "No" on Part IV, line 2 of its Form 990, or check the box on line H of its Form 990-EZ, or on line 2 of its Form 990-PF, to certify that it does not meet the filing requirements of Schedule B (Form 990, 990-EZ, or 990-PF).

LHA For Paperwork Reduction Act Notice, see the Instructions for Form 990, 990-EZ, or 990-PF. Schedule B (Form 990, 990-EZ, or 990-PF) (2010)

Name of organization OPEN YOUR HEART TO THE HUNGRY AND HOMELESS	Employer identification number 36-3488089
--	--

Part I Contributors (see instructions)

(a) No.	(b) Name, address, and ZIP + 4	(c) Aggregate contributions	(d) Type of contribution
1	ADC FOUNDATION PO BOX 1011 MINNEAPOLIS, MN 55440-1011	\$ 10,000.	Person <input checked="" type="checkbox"/> Payroll <input type="checkbox"/> Noncash <input type="checkbox"/> (Complete Part II if there is a noncash contribution.)
2	ST. JUDE MEDICAL FOUNDATION ONE ST JUDE MEDICAL DRIVE ST PAUL, MN 55117-9983	\$ 15,000.	Person <input checked="" type="checkbox"/> Payroll <input type="checkbox"/> Noncash <input type="checkbox"/> (Complete Part II if there is a noncash contribution.)
3	OTTO BREMER FOUNDATION 445 MINNESOTA ST SUITE 2250 ST PAUL, MN 55101-2107	\$ 15,000.	Person <input checked="" type="checkbox"/> Payroll <input type="checkbox"/> Noncash <input type="checkbox"/> (Complete Part II if there is a noncash contribution.)
4	THE SAINT PAUL FOUNDATION 55 FIFTH ST E SUITE 600 ST PAUL, MN 55101-2107	\$ 5,000.	Person <input checked="" type="checkbox"/> Payroll <input type="checkbox"/> Noncash <input type="checkbox"/> (Complete Part II if there is a noncash contribution.)
5	TAPEMARK COMPANY 1685 MARTHALER LANE WEST ST PAUL, MN 55118	\$ 7,324.	Person <input checked="" type="checkbox"/> Payroll <input type="checkbox"/> Noncash <input type="checkbox"/> (Complete Part II if there is a noncash contribution.)
6	C.H. ROBINSON 14701 CHARLSON ROAD SUITE 1750 EDEN PRAIRIE, MN 55344	\$ 17,043.	Person <input checked="" type="checkbox"/> Payroll <input type="checkbox"/> Noncash <input type="checkbox"/> (Complete Part II if there is a noncash contribution.)

Name of organization OPEN YOUR HEART TO THE HUNGRY AND HOMELESS	Employer identification number 36-3488089
---	---

Part II Noncash Property (see instructions)

(a) No. from Part I	(b) Description of noncash property given	(c) FMV (or estimate) (see instructions)	(d) Date received
	_____ _____ _____ _____	\$ _____	_____
	_____ _____ _____ _____	\$ _____	_____
	_____ _____ _____ _____	\$ _____	_____
	_____ _____ _____ _____	\$ _____	_____
	_____ _____ _____ _____	\$ _____	_____
	_____ _____ _____ _____	\$ _____	_____
	_____ _____ _____ _____	\$ _____	_____

Name of organization OPEN YOUR HEART TO THE HUNGRY AND HOMELESS	Employer identification number 36-3488089
---	---

Part III Exclusively religious, charitable, etc., individual contributions to section 501(c)(7), (8), or (10) organizations aggregating more than \$1,000 for the year. Complete columns (a) through (e) and the following line entry. For organizations completing Part III, enter the total of *exclusively* religious, charitable, etc., contributions of \$1,000 or less for the year. (Enter this information once. See instructions.) ▶ \$

(a) No. from Part I	(b) Purpose of gift	(c) Use of gift	(d) Description of how gift is held
(e) Transfer of gift			
Transferee's name, address, and ZIP + 4		Relationship of transferor to transferee	
(a) No. from Part I	(b) Purpose of gift	(c) Use of gift	(d) Description of how gift is held
(e) Transfer of gift			
Transferee's name, address, and ZIP + 4		Relationship of transferor to transferee	
(a) No. from Part I	(b) Purpose of gift	(c) Use of gift	(d) Description of how gift is held
(e) Transfer of gift			
Transferee's name, address, and ZIP + 4		Relationship of transferor to transferee	
(a) No. from Part I	(b) Purpose of gift	(c) Use of gift	(d) Description of how gift is held
(e) Transfer of gift			
Transferee's name, address, and ZIP + 4		Relationship of transferor to transferee	

SCHEDULE D
(Form 990)

Department of the Treasury
Internal Revenue Service

Supplemental Financial Statements

▶ Complete if the organization answered "Yes," to Form 990,
Part IV, line 6, 7, 8, 9, 10, 11, or 12.

▶ Attach to Form 990. ▶ See separate instructions.

OMB No. 1545-0047

2010

Open to Public
Inspection

Name of the organization **OPEN YOUR HEART TO THE HUNGRY AND HOMELESS**

Employer identification number
36-3488089

Part I Organizations Maintaining Donor Advised Funds or Other Similar Funds or Accounts. Complete if the organization answered "Yes" to Form 990, Part IV, line 6.

	(a) Donor advised funds	(b) Funds and other accounts
1 Total number at end of year		
2 Aggregate contributions to (during year)		
3 Aggregate grants from (during year)		
4 Aggregate value at end of year		
5 Did the organization inform all donors and donor advisors in writing that the assets held in donor advised funds are the organization's property, subject to the organization's exclusive legal control?		<input type="checkbox"/> Yes <input type="checkbox"/> No
6 Did the organization inform all grantees, donors, and donor advisors in writing that grant funds can be used only for charitable purposes and not for the benefit of the donor or donor advisor, or for any other purpose conferring impermissible private benefit?		<input type="checkbox"/> Yes <input type="checkbox"/> No

Part II Conservation Easements. Complete if the organization answered "Yes" to Form 990, Part IV, line 7.

1 Purpose(s) of conservation easements held by the organization (check all that apply).

Preservation of land for public use (e.g., recreation or education) Preservation of an historically important land area

Protection of natural habitat Preservation of a certified historic structure

Preservation of open space

2 Complete lines 2a through 2d if the organization held a qualified conservation contribution in the form of a conservation easement on the last day of the tax year.

	Held at the End of the Tax Year
a Total number of conservation easements	2a
b Total acreage restricted by conservation easements	2b
c Number of conservation easements on a certified historic structure included in (a)	2c
d Number of conservation easements included in (c) acquired after 8/17/06, and not on a historic structure listed in the National Register	2d

3 Number of conservation easements modified, transferred, released, extinguished, or terminated by the organization during the tax year ▶ _____

4 Number of states where property subject to conservation easement is located ▶ _____

5 Does the organization have a written policy regarding the periodic monitoring, inspection, handling of violations, and enforcement of the conservation easements it holds?

Yes No

6 Staff and volunteer hours devoted to monitoring, inspecting, and enforcing conservation easements during the year ▶ _____

7 Amount of expenses incurred in monitoring, inspecting, and enforcing conservation easements during the year ▶ \$ _____

8 Does each conservation easement reported on line 2(d) above satisfy the requirements of section 170(h)(4)(B)(i) and section 170(h)(4)(B)(ii)?

Yes No

9 In Part XIV, describe how the organization reports conservation easements in its revenue and expense statement, and balance sheet, and include, if applicable, the text of the footnote to the organization's financial statements that describes the organization's accounting for conservation easements.

Part III Organizations Maintaining Collections of Art, Historical Treasures, or Other Similar Assets.

Complete if the organization answered "Yes" to Form 990, Part IV, line 8.

1a If the organization elected, as permitted under SFAS 116 (ASC 958), not to report in its revenue statement and balance sheet works of art, historical treasures, or other similar assets held for public exhibition, education, or research in furtherance of public service, provide, in Part XIV, the text of the footnote to its financial statements that describes these items.

b If the organization elected, as permitted under SFAS 116 (ASC 958), to report in its revenue statement and balance sheet works of art, historical treasures, or other similar assets held for public exhibition, education, or research in furtherance of public service, provide the following amounts relating to these items:

(i) Revenues included in Form 990, Part VIII, line 1

(ii) Assets included in Form 990, Part X

2 If the organization received or held works of art, historical treasures, or other similar assets for financial gain, provide the following amounts required to be reported under SFAS 116 (ASC 958) relating to these items:

a Revenues included in Form 990, Part VIII, line 1

b Assets included in Form 990, Part X

Part III Organizations Maintaining Collections of Art, Historical Treasures, or Other Similar Assets (continued)

- 3 Using the organization's acquisition, accession, and other records, check any of the following that are a significant use of its collection items (check all that apply):
- a Public exhibition
 - b Scholarly research
 - c Preservation for future generations
 - d Loan or exchange programs
 - e Other _____
- 4 Provide a description of the organization's collections and explain how they further the organization's exempt purpose in Part XIV.
- 5 During the year, did the organization solicit or receive donations of art, historical treasures, or other similar assets to be sold to raise funds rather than to be maintained as part of the organization's collection? Yes No

Part IV Escrow and Custodial Arrangements. Complete if the organization answered "Yes" to Form 990, Part IV, line 9, or reported an amount on Form 990, Part X, line 21.

- 1a Is the organization an agent, trustee, custodian or other intermediary for contributions or other assets not included on Form 990, Part X? Yes No
- b If "Yes," explain the arrangement in Part XIV and complete the following table:
- | | Amount |
|---------------------------------|--------|
| c Beginning balance | 1c |
| d Additions during the year | 1d |
| e Distributions during the year | 1e |
| f Ending balance | 1f |
- 2a Did the organization include an amount on Form 990, Part X, line 21? Yes No
- b If "Yes," explain the arrangement in Part XIV.

Part V Endowment Funds. Complete if the organization answered "Yes" to Form 990, Part IV, line 10.

	(a) Current year	(b) Prior year	(c) Two years back	(d) Three years back	(e) Four years back
1a Beginning of year balance					
b Contributions					
c Net investment earnings, gains, and losses					
d Grants or scholarships					
e Other expenditures for facilities and programs					
f Administrative expenses					
g End of year balance					

- 2 Provide the estimated percentage of the year end balance held as:
- a Board designated or quasi-endowment _____ %
 - b Permanent endowment _____ %
 - c Term endowment _____ %
- 3a Are there endowment funds not in the possession of the organization that are held and administered for the organization by:
- | | Yes | No |
|---|--------|----|
| (i) unrelated organizations | 3a(i) | |
| (ii) related organizations | 3a(ii) | |
| b If "Yes" to 3a(ii), are the related organizations listed as required on Schedule R? | 3b | |
- 4 Describe in Part XIV the intended uses of the organization's endowment funds.

Part VI Land, Buildings, and Equipment. See Form 990, Part X, line 10.

Description of investment	(a) Cost or other basis (investment)	(b) Cost or other basis (other)	(c) Accumulated depreciation	(d) Book value
1a Land				
b Buildings				
c Leasehold improvements				
d Equipment		6,317.	5,946.	371.
e Other				
Total. Add lines 1a through 1e. (Column (d) must equal Form 990, Part X, column (B), line 10(c).)				371.

Part VII Investments - Other Securities. See Form 990, Part X, line 12.

(a) Description of security or category (including name of security)	(b) Book value	(c) Method of valuation: Cost or end-of-year market value
(1) Financial derivatives		
(2) Closely-held equity interests		
(3) Other		
(A)		
(B)		
(C)		
(D)		
(E)		
(F)		
(G)		
(H)		
(I)		
Total. (Col (b) must equal Form 990, Part X, col (B) line 12.) ▶		

Part VIII Investments - Program Related. See Form 990, Part X, line 13.

(a) Description of investment type	(b) Book value	(c) Method of valuation: Cost or end-of-year market value
(1)		
(2)		
(3)		
(4)		
(5)		
(6)		
(7)		
(8)		
(9)		
(10)		
Total. (Col (b) must equal Form 990, Part X, col (B) line 13.) ▶		

Part IX Other Assets. See Form 990, Part X, line 15.

(a) Description	(b) Book value
(1)	
(2)	
(3)	
(4)	
(5)	
(6)	
(7)	
(8)	
(9)	
(10)	
Total. (Column (b) must equal Form 990, Part X, col (B) line 15.) ▶	

Part X Other Liabilities. See Form 990, Part X, line 25.

1. (a) Description of liability	(b) Amount
(1) Federal income taxes	
(2)	
(3)	
(4)	
(5)	
(6)	
(7)	
(8)	
(9)	
(10)	
(11)	

Total. (Column (b) must equal Form 990, Part X, col (B) line 25.) ▶

FIN 48 (ASC 740) Footnote. In Part XIV, provide the text of the footnote to the organization's financial statements that reports the organization's liability for uncertain tax positions under FIN 48 (ASC 740).

Part XI Reconciliation of Change in Net Assets from Form 990 to Audited Financial Statements

1	Total revenue (Form 990, Part VIII, column (A), line 12)	1	969,853.
2	Total expenses (Form 990, Part IX, column (A), line 25)	2	973,629.
3	Excess or (deficit) for the year. Subtract line 2 from line 1	3	-3,776.
4	Net unrealized gains (losses) on investments	4	
5	Donated services and use of facilities	5	
6	Investment expenses	6	
7	Prior period adjustments	7	
8	Other (Describe in Part XIV.)	8	
9	Total adjustments (net). Add lines 4 through 8	9	0.
10	Excess or (deficit) for the year per audited financial statements. Combine lines 3 and 9	10	-3,776.

Part XII Reconciliation of Revenue per Audited Financial Statements With Revenue per Return

1	Total revenue, gains, and other support per audited financial statements	1	969,853.
2	Amounts included on line 1 but not on Form 990, Part VIII, line 12:		
a	Net unrealized gains on investments	2a	
b	Donated services and use of facilities	2b	
c	Recoveries of prior year grants	2c	
d	Other (Describe in Part XIV.)	2d	
e	Add lines 2a through 2d	2e	0.
3	Subtract line 2e from line 1	3	969,853.
4	Amounts included on Form 990, Part VIII, line 12, but not on line 1:		
a	Investment expenses not included on Form 990, Part VIII, line 7b	4a	
b	Other (Describe in Part XIV.)	4b	
c	Add lines 4a and 4b	4c	0.
5	Total revenue. Add lines 3 and 4c. (This must equal Form 990, Part I, line 12.)	5	969,853.

Part XIII Reconciliation of Expenses per Audited Financial Statements With Expenses per Return

1	Total expenses and losses per audited financial statements	1	973,629.
2	Amounts included on line 1 but not on Form 990, Part IX, line 25:		
a	Donated services and use of facilities	2a	
b	Prior year adjustments	2b	
c	Other losses	2c	
d	Other (Describe in Part XIV.)	2d	
e	Add lines 2a through 2d	2e	0.
3	Subtract line 2e from line 1	3	973,629.
4	Amounts included on Form 990, Part IX, line 25, but not on line 1:		
a	Investment expenses not included on Form 990, Part VIII, line 7b	4a	
b	Other (Describe in Part XIV.)	4b	
c	Add lines 4a and 4b	4c	0.
5	Total expenses. Add lines 3 and 4c. (This must equal Form 990, Part I, line 18.)	5	973,629.

Part XIV Supplemental Information

Complete this part to provide the descriptions required for Part II, lines 3, 5, and 9; Part III, lines 1a and 4; Part IV, lines 1b and 2b; Part V, line 4; Part X, line 2; Part XI, line 8; Part XII, lines 2d and 4b; and Part XIII, lines 2d and 4b. Also complete this part to provide any additional information.

**SCHEDULE I
(Form 990)**

Department of the Treasury
Internal Revenue Service

**Grants and Other Assistance to Organizations,
Governments, and Individuals in the United States**

Complete if the organization answered "Yes" to Form 990, Part IV, line 21 or 22.
▶ Attach to Form 990.

OMB No. 1545-0047

2010

Open to Public
Inspection

Name of the organization **OPEN YOUR HEART TO THE HUNGRY AND
HOMELESS**

Employer identification number
36-3488089

Part I General Information on Grants and Assistance

- 1** Does the organization maintain records to substantiate the amount of the grants or assistance, the grantees' eligibility for the grants or assistance, and the selection criteria used to award the grants or assistance? Yes No
- 2** Describe in Part IV the organization's procedures for monitoring the use of grant funds in the United States.

Part II Grants and Other Assistance to Governments and Organizations in the United States. Complete if the organization answered "Yes" to Form 990, Part IV, line 21, for any recipient that received more than \$5,000. Check this box if no one recipient received more than \$5,000. Part II can be duplicated if additional space is needed

1 (a) Name and address of organization or government	(b) EIN	(c) IRC section if applicable	(d) Amount of cash grant	(e) Amount of non-cash assistance	(f) Method of valuation (book, FMV, appraisal, other)	(g) Description of non-cash assistance	(h) Purpose of grant or assistance
360 COMMUNITIES 501 E HIGHWAY 13 SUITE 102 BURNSVILLE, MN 55337	41-0987708		9,534.	0.			SHELTER GRANTS
AMHERST H. WILDER FOUNDATION 451 LEXINGTON PKWY N ST PAUL, MN 55104	41-0693889		7,128.	0.			EDUCATION GRANTS
ASCENSION PLACE 1803 BRYANT AVE N MINNEAPOLIS, MN 55411	41-1396238		6,426.	0.			SHELTER AND EDUCATION GRANTS
AEON 1625 PARK AVE MINNEAPOLIS, MN 55404	41-1558711		10,000.	0.			SHELTER GRANTS
AIN DAH YUNG OUR HOME SHELTER 1089 PORTLAND AVE ST PAUL, MN 55104	41-1697692		14,613.	0.			SHELTER AND EDUCATION GRANTS
AL-MAA 'UUN 1729 LYNDAL AVE N MINNEAPOLIS, MN 55411	27-1893708		5,473.	0.			FOOD GRANTS

- 2** Enter total number of section 501(c)(3) and government organizations
- 3** Enter total number of other organizations

LHA For Paperwork Reduction Act Notice, see the Instructions for Form 990.

Schedule I (Form 990) (2010)

SEE PART IV FOR COLUMN (H) DESCRIPTIONS

OPEN YOUR HEART TO THE HUNGRY AND
HOMELESS

Schedule I (Form 990)

36-3488089

Page 1

Part II Continuation of Grants and Other Assistance to Governments and Organizations in the United States (Schedule I (Form 990), Part II.)

(a) Name and address of organization or government	(b) EIN	(c) IRC section if applicable	(d) Amount of cash grant	(e) Amount of non-cash assistance	(f) Method of valuation (book, FMV, appraisal, other)	(g) Description of non-cash assistance	(h) Purpose of grant or assistance
ASIAN MEDIA ACCESS 2418 PLYMOUTH AVE N MINNEAPOLIS, MN 55411	41-1736822		12,566.	0.			SHELTER AND EDUCATION GRANTS
CHURCHES UNITED IN MINISTRY 102 W 2ND ST DULUTH, MN 55802	41-1227969		12,141.	0.			SHELTER AND EDUCATION GRANTS
AVENUES FOR HOMELESS YOUTH 1708 OAK PARK AVE N MINNEAPOLIS, MN 55411	41-1765140		10,000.	0.			SHELTER GRANTS
THE BRIDGE FOR YOUTH 1111 W 22ND ST MINNEAPOLIS, MN 55405	41-0983062		14,274.	0.			SHELTER GRANTS
BUILDING BLOCKS OF ISLAM 2001 CENTRAL AVE NE MINNEAPOLIS, MN 55418	20-5035650		8,900.	0.			FOOD GRANTS
CENTRAL MINNESOTA TASK FORCE ON BATTERED WOMEN - PO BOX 367 - ST CLOUD, MN 56302	41-1344743		6,556.	0.			SHELTER AND EDUCATION GRANTS
CLEAR WATERS LIFE CENTER PO BOX 155 CLEARBROOK, MN 56634	77-0643868		10,000.	0.			SHELTER GRANTS
COMMUNITY CAFE PO BOX 5192 GRAND RAPIDS, MN 55744	20-1239743		5,099.	0.			FOOD GRANTS
DAKOTA WOODLANDS 3430 WESCOTT WOODLANDS EAGAN, MN 55123	41-1424653		10,567.	0.			SHELTER GRANTS

LHA

Schedule I (Form 990)

OPEN YOUR HEART TO THE HUNGRY AND
HOMELESS

Schedule I (Form 990)

36-3488089

Page 1

Part II Continuation of Grants and Other Assistance to Governments and Organizations in the United States (Schedule I (Form 990), Part II.)

(a) Name and address of organization or government	(b) EIN	(c) IRC section if applicable	(d) Amount of cash grant	(e) Amount of non-cash assistance	(f) Method of valuation (book, FMV, appraisal, other)	(g) Description of non-cash assistance	(h) Purpose of grant or assistance
DAMIANO OF DULUTH 206 W 4TH ST DULUTH, MN 55806	41-1453521		10,000.	0.			FOOD GRANTS
THE EMERGENCY FOOD SHELF NETWORK 8501 54TH AVE N NEW HOPE, MN 55428	41-1246504		10,000.	0.			FOOD GRANTS
EMMA NORTON SERVICES 670 N ROBERT ST ST PAUL, MN 55101	41-0859485		6,608.	0.			SHELTER GRANTS
FAITH UNITED METHODIST CHURCH 1531 HUGHITT AVE SUPERIOR, WI 54880	39-1840533		7,500.	0.			SHELTER GRANTS
FAMILIES MOVING FORWARD 1808 EMERSON AVE N MINNEAPOLIS, MN 55411	41-1726007		7,200.	0.			SHELTER GRANTS
FAMILY HOUSING FUND/PROJECT HOMELESS CONNECT - 801 NICOLLET MALL STE 1825 - MINNEAPOLIS, MN 55402	41-1380923		17,500.	0.			SHELTER GRANTS
HELPING HANDS EMERGENCY SERVICES 119 S MAIN ST MAHNOMEN, MN 56557	41-1476426		10,000.	0.			FOOD GRANTS
HOPE COALITION 480 8TH ST RED WING, MN 55066	41-1720180		5,703.	0.			EDUCATION GRANTS
HOPE COMMUNITY 611 E FRANKLIN AVE MINNEAPOLIS, MN 55404	41-1292817		10,000.	0.			SHELTER GRANTS

LHA

Schedule I (Form 990)

OPEN YOUR HEART TO THE HUNGRY AND
HOMELESS

Schedule I (Form 990)

36-3488089

Page 1

Part II Continuation of Grants and Other Assistance to Governments and Organizations in the United States (Schedule I (Form 990), Part II.)

(a) Name and address of organization or government	(b) EIN	(c) IRC section if applicable	(d) Amount of cash grant	(e) Amount of non-cash assistance	(f) Method of valuation (book, FMV, appraisal, other)	(g) Description of non-cash assistance	(h) Purpose of grant or assistance
HOUSE OF CHARITY 510 S 8TH ST MINNEAPOLIS, MN 55404	41-0795347		10,000.	0.			FOOD GRANTS
HUNGER SOLUTIONS MINNESOTA 555 PARK ST STE 420 ST PAUL, MN 55103	36-3567366		200,000.	0.			FOOD GRANTS
KINGSWOOD CHURCH 1264 109TH ST BLAINE, MN 55434	41-1231611		9,551.	0.			FOOD GRANTS
METRO-WIDE ENGAGEMENT ON SHELTER AND HOUSING - 740 E 17TH ST - MINNEAPOLIS, MN 55404	41-2006561		10,000.	0.			SHELTER GRANTS
MINNESOTA ASSISTANCE COUNCIL FOR VETERANS - 360 ROBERT ST N STE 360 - ST PAUL, MN 55101	41-1694717		10,000.	0.			SHELTER GRANTS
MINNESOTA COALITION FOR THE HOMELESS INC - 2233 UNIVERSITY AVE W STE 434 - ST PAUL, MN 55114	41-1601248		5,000.	0.			SHELTER GRANTS
OUR SAVIOURS OUTREACH MINISTRIES 2219 CHICAGO AVE S MINNEAPOLIS, MN 55404	20-0810105		9,775.	0.			SHELTER GRANTS
PARTNERS FOR AFFORDABLE HOUSING INC - 512 E MULBERRY ST - MANKATO, MN 56001	36-3333394		9,616.	0.			EDUCATION GRANTS
PEOPLE INCORPORATED 317 YORK AVE ST PAUL, MN 55130	41-0962296		10,000.	0.			SHELTER GRANTS

LHA

Schedule I (Form 990)

OPEN YOUR HEART TO THE HUNGRY AND
HOMELESS

Schedule I (Form 990)

36-3488089

Page 1

Part II Continuation of Grants and Other Assistance to Governments and Organizations in the United States (Schedule I (Form 990), Part II.)

(a) Name and address of organization or government	(b) EIN	(c) IRC section if applicable	(d) Amount of cash grant	(e) Amount of non-cash assistance	(f) Method of valuation (book, FMV, appraisal, other)	(g) Description of non-cash assistance	(h) Purpose of grant or assistance
PEOPLE RESPONDING IN SOCIAL MINISTRY - 730 FLORIDA AVE S - GOLDEN VALLEY, MN 55426	41-1442049		7,251.	0.			FOOD GRANTS
RESOURCE 1900 CHICAGO AVE MINNEAPOLIS, MN 55404	41-0828779		8,120.	0.			SHELTER GRANTS
RUTHS HOUSE OF HOPE 124 FIRST AVE SW FARIBAULT, MN 55021	87-0709671		10,000.	0.			SHELTER GRANTS
SAFE HAVEN SHELTER FOR YOUTH 13780 MCKENNA RD NW SHAKOPEE, MN 55379	41-1804846		9,561.	0.			SHELTER GRANTS
THE SALVATION ARMY - AUSTIN 409 FIRST AVE NE AUSTIN, MN 55912	41-0698597		9,607.	0.			FOOD GRANTS
THE SALVATION ARMY - TWIN CITIES SOCIAL SERVICES - 2445 PRIOR AVE - ROSEVILLE, MN 55113	41-0698597		10,000.	0.			SHELTER GRANTS
THE SALVATION ARMY - HARBOR LIGHT CENTER - 1010 CURRIE AVE N - MINNEAPOLIS, MN 55403	41-0969448		10,000.	0.			SHELTER GRANTS
SECOND HARVEST NORTH CENTRAL FOOD BANK - 2222 CROMELL DR - GRAND RAPIDS, MN 55744	41-1782776		9,814.	0.			FOOD GRANTS
SHARING AND CARING HANDS 525 7TH ST N MINNEAPOLIS, MN 55405	36-3412619		13,089.	0.			SHELTER GRANTS

LHA

Schedule I (Form 990)

OPEN YOUR HEART TO THE HUNGRY AND
HOMELESS

Schedule I (Form 990)

36-3488089

Page 1

Part II Continuation of Grants and Other Assistance to Governments and Organizations in the United States (Schedule I (Form 990), Part II.)

(a) Name and address of organization or government	(b) EIN	(c) IRC section if applicable	(d) Amount of cash grant	(e) Amount of non-cash assistance	(f) Method of valuation (book, FMV, appraisal, other)	(g) Description of non-cash assistance	(h) Purpose of grant or assistance
SHARING KORNER FOODSHELF 595 ARUNDEL ST ST PAUL, MN 55103	41-1631989		10,000.	0.			FOOD GRANTS
SOJOURNER PROJECT PO BOX 272 HOPKINS, MN 55343	41-1363580		9,781.	0.			EDUCATION GRANTS
SOMEPLACE SAFE PO BOX 815 FERGUS FALLS, MN 56538	41-1358654		9,703.	0.			SHELTER GRANTS
ST LOUIS PARK EMERGENCY PROGRAM 6812 W LAKE ST ST LOUIS PARK, MN 55426	51-0188692		9,550.	0.			FOOD GRANTS
ST STEPHENS HUMAN SERVICES 2211 CLINTON AVE S MINNEAPOLIS, MN 55404	01-0639118		10,000.	0.			SHELTER GRANTS
TUBMAN 3111 FIRST AVE S MINNEAPOLIS, MN 55408	41-1240048		14,950.	0.			SHELTER GRANTS
UNION GOSPEL MISSION ASSOCIATION OF ST PAUL - 77 E NINTH ST - ST PAUL, MN 55101	41-0705847		17,598.	0.			EDUCATION GRANTS
VICTORY CELEBRATION CHURCH AND WORLD MINISTRIES - 2819 HAMLINE AVE N - ROSEVILLE, MN 55113	41-1991547		10,000.	0.			FOOD GRANTS
WASECA AREA NEIGHBORHOOD SERVICE CENTER - 203 THIRD AVE NW - WASECA, MN 56093	41-1452216		10,000.	0.			FOOD GRANTS

LHA

Schedule I (Form 990)

OPEN YOUR HEART TO THE HUNGRY AND
HOMELESS

Schedule I (Form 990)

36-3488089

Page 1

Part II Continuation of Grants and Other Assistance to Governments and Organizations in the United States (Schedule I (Form 990), Part II.)

(a) Name and address of organization or government	(b) EIN	(c) IRC section if applicable	(d) Amount of cash grant	(e) Amount of non-cash assistance	(f) Method of valuation (book, FMV, appraisal, other)	(g) Description of non-cash assistance	(h) Purpose of grant or assistance
WINONA VOLUNTEER SERVICES 402 E 2ND ST WINONA, MN 55987	23-7376207		8,704.	0.			FOOD GRANTS
WOMENS ADVOCATES 588 GRAND AVE ST PAUL, MN 55102	23-7310701		5,703.	0.			EDUCATION GRANTS
YOUNG WOMENS CHRISTIAN ASSOCIATION OF ST PAUL - 375 SELBY AVE - ST PAUL, MN 55102	41-0693892		12,356.	0.			EDUCATION GRANTS

OPEN YOUR HEART TO THE HUNGRY AND
HOMELESS

Part III **Grants and Other Assistance to Individuals in the United States.** Complete if the organization answered "Yes" to Form 990, Part IV, line 22.
Part III can be duplicated if additional space is needed.

(a) Type of grant or assistance	(b) Number of recipients	(c) Amount of cash grant	(d) Amount of non-cash assistance	(e) Method of valuation (book, FMV, appraisal, other)	(f) Description of non-cash assistance

Part IV **Supplemental Information.** Complete this part to provide the information required in Part I, line 2, and any other additional information.

SCHEDULE I, PART I, LINE 2: TO QUALIFY FOR RECEIVING A GRANT, AN

ORGANIZATION MUST SIGN (BY TWO PRINCIPALS) AN AFFIDAVIT OF COMPLIANCE THAT:

1) THE DETERMINATION LETTER RECEIVED BY THE ORGANIZATION FROM THE IRS

ACKNOWLEDGES THAT THE CHARITABLE ORGANIZATION IS A 501(C)(3) ORGANIZATION

AND THAT SUCH STATUS REMAINS IN EFFECT.

2) CONTRIBUTIONS TO THE ORGANIZATION ARE DEDUCTIBLE FOR FEDERAL AND

MINNESOTA INCOME TAX PURPOSES PURSUANT TO SECTION 170 OF THE INTERNAL

REVENUE CODE.

3) THE ORGANIZATION IS IN COMPLIANCE WITH ALL THE RELEVANT PROVISIONS OF

Part IV Supplemental Information

CHAPTER 209 OF THE MINNESOTA STATUTES AND CHARTERED TO ADMINISTER FOOD
AND/OR SHELTER PROGRAMS FOR THE HOMELESS.

PART II, LINE 1, COLUMN (H):

NAME OF ORGANIZATION OR GOVERNMENT: CHURCHES UNITED IN MINISTRY

(H) PURPOSE OF GRANT OR ASSISTANCE: SHELTER AND EDUCATION GRANTS

SHELTER AND EDUCATION GRANTS

COPY

SCHEDULE O
(Form 990 or 990-EZ)

Department of the Treasury
Internal Revenue Service

Supplemental Information to Form 990 or 990-EZ

Complete to provide information for responses to specific questions on
Form 990 or 990-EZ or to provide any additional information.
▶ Attach to Form 990 or 990-EZ.

OMB No. 1545-0047

2010

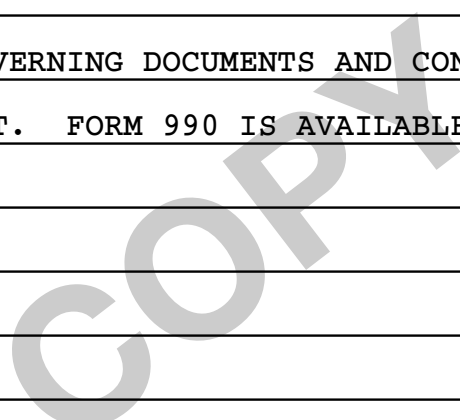
Open to Public
Inspection

Name of the organization OPEN YOUR HEART TO THE HUNGRY AND HOMELESS	Employer identification number 36-3488089
---	---

FORM 990, PART VI, SECTION B, LINE 11: BOARD OF DIRECTORS REVIEWS AND APPROVES PRIOR TO FILING.

FORM 990, PART VI, SECTION B, LINE 12C: THE ORGANIZATION REQUIRES ALL EMPLOYEES AND BOARD MEMBERS TO COMPLETE AN ANNUAL CONFLICT OF INTEREST DISCLOSURE STATEMENT. WHEN A CONFLICT ARISES DURING THE YEAR, THE ORGANIZATION REQUIRES DISCLOSURE AND DOCUMENTATION IN THE BOARD MEETING MINUTES AND REQUIRES THE PERSON WITH A CONFLICT TO DISABUSE HIMSELF OR HERSELF FROM ANY PARTICIPATION IN THE CONTRACT OR TRANSACTION IN QUESTION AND TO ABSTAIN FROM ANY VOTING RELATED TO THE CONTRACT OR TRANSACTION.

FORM 990, PART VI, SECTION C, LINE 19: GOVERNING DOCUMENTS AND CONFLICT OF INTEREST POLICY ARE AVAILABLE UPON REQUEST. FORM 990 IS AVAILABLE VIA THE ORGANIZATION'S WEBSITE OR UPON REQUEST.



Asset No.	Description	Date Acquired	Method	Life	Line No.	Unadjusted Cost Or Basis	Bus % Excl	* Reduction In Basis	Basis For Depreciation	Accumulated Depreciation	Current Sec 179	Current Year Deduction
	MACHINERY & EQUIPMENT											
1	COPY MACHINE	111300	SL	5.00	16	2,000.			2,000.	2,000.		0.
2	OFFICE EQUIPMENT	121301	SL	5.00	16	1,803.			1,803.	1,803.		0.
3	DELL COMPUTERS (3)	052404	SL	4.00	16	1,473.			1,473.	1,473.		0.
4	SCANNER	063004	SL	4.00	16	300.			300.	300.		0.
5	COMPUTER	062308	SL	5.00	16	741.			741.	222.		148.
	* 990 PAGE 10 TOTAL MACHINERY & EQUIPM					6,317.		0.	6,317.	5,798.	0.	148.
	* GRAND TOTAL 990 PAGE 10 DEPR					6,317.		0.	6,317.	5,798.	0.	148.

Application for Extension of Time To File an Exempt Organization Return

▶ **File a separate application for each return.**

- If you are filing for an **Automatic 3-Month Extension**, complete only **Part I** and check this box **X**
- If you are filing for an **Additional (Not Automatic) 3-Month Extension**, complete only **Part II** (on page 2 of this form).

Do not complete Part II unless you have already been granted an automatic 3-month extension on a previously filed Form 8868.

Electronic filing (e-file). You can electronically file Form 8868 if you need a 3-month automatic extension of time to file (6 months for a corporation required to file Form 990-T), or an additional (not automatic) 3-month extension of time. You can electronically file Form 8868 to request an extension of time to file any of the forms listed in Part I or Part II with the exception of Form 8870, Information Return for Transfers Associated With Certain Personal Benefit Contracts, which must be sent to the IRS in paper format (see instructions). For more details on the electronic filing of this form, visit www.irs.gov/efile and click on *e-file for Charities & Nonprofits*.

Part I Automatic 3-Month Extension of Time. Only submit original (no copies needed).

A corporation required to file Form 990-T and requesting an automatic 6-month extension - check this box and complete Part I only

All other corporations (including 1120-C filers), partnerships, REMICs, and trusts must use Form 7004 to request an extension of time to file income tax returns.

Type or print	Name of exempt organization OPEN YOUR HEART TO THE HUNGRY AND HOMELESS	Employer identification number 36-3488089
File by the due date for filing your return. See instructions.	Number, street, and room or suite no. If a P.O. box, see instructions. 121 EAST 7TH PLACE, NO. 110	
	City, town or post office, state, and ZIP code. For a foreign address, see instructions. ST PAUL, MN 55101-0706	

Enter the Return code for the return that this application is for (file a separate application for each return) 01

Application Is For	Return Code	Application Is For	Return Code
Form 990	01	Form 990-T (corporation)	07
Form 990-BL	02	Form 1041-A	08
Form 990-EZ	03	Form 4720	09
Form 990-PF	04	Form 5227	10
Form 990-T (sec. 401(a) or 408(a) trust)	05	Form 6069	11
Form 990-T (trust other than above)	06	Form 8870	12

THE ORGANIZATION

- The books are in the care of ▶ **121 EAST 7TH PLACE, NO. 110 - ST PAUL, MN 55101-0706**
 Telephone No. ▶ **651-224-8011** FAX No. ▶ _____
- If the organization does not have an office or place of business in the United States, check this box
- If this is for a Group Return, enter the organization's four digit Group Exemption Number (GEN) _____. If this is for the whole group, check this box . If it is for part of the group, check this box and attach a list with the names and EINs of all members the extension is for.

1 I request an automatic 3-month (6 months for a corporation required to file Form 990-T) extension of time until **AUGUST 15, 2011**, to file the exempt organization return for the organization named above. The extension is for the organization's return for:
 ▶ calendar year **2010** or
 ▶ tax year beginning _____, and ending _____.

2 If the tax year entered in line 1 is for less than 12 months, check reason: Initial return Final return
 Change in accounting period

3a If this application is for Form 990-BL, 990-PF, 990-T, 4720, or 6069, enter the tentative tax, less any nonrefundable credits. See instructions.	3a	\$	0.
b If this application is for Form 990-PF, 990-T, 4720, or 6069, enter any refundable credits and estimated tax payments made. Include any prior year overpayment allowed as a credit.	3b	\$	0.
c Balance due. Subtract line 3b from line 3a. Include your payment with this form, if required, by using EFTPS (Electronic Federal Tax Payment System). See instructions.	3c	\$	0.

Caution. If you are going to make an electronic fund withdrawal with this Form 8868, see Form 8453-EO and Form 8879-EO for payment instructions.

LHA **For Paperwork Reduction Act Notice, see Instructions.**