



**OPEN  
YOUR  
HEART**

TO THE HUNGRY  
AND HOMELESS

*Giving where the need is greatest.*



# annual report 2007



people  
like you

hunger and homelessness  
affect children, the elderly  
and working adults



## a message from president Yoji Shimizu



In 2007, Open Your Heart to the Hungry and Homeless began its third decade of helping people in Minnesota meet life's essential needs. Although our 21st year proved to be successful, raising more than \$800,000 in tax-deductible donations, the challenges we faced across the state were immense:

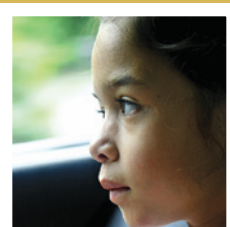
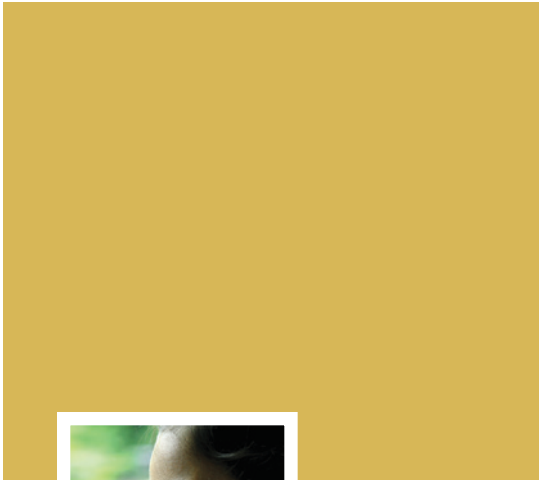
The number of people who depend on food shelves has never been greater—local food shelves recorded nearly two million visits in 2007, half of the people to receive assistance were children. Today, 55 percent of the families that rely on food shelves to make ends meet are working families.

The rising costs of housing have left an increasing number of people, from every community and every walk of life, without a permanent home. On any given night more than 9,000 people, including 3,000 children, are homeless or are without permanent housing.

We were able to respond to the needs of communities throughout Minnesota by distributing nearly \$500,000 to 41 agencies statewide that provide food and shelter assistance, and over \$94,000 to 47 agencies across the state that provide school-related needs to students who are homeless.

But we could not have accomplished so much without the generous support of everyone who contributed to our cause. To those of you who donated your time, money and effort, we say thank you.

Food and shelter are needs that can't wait. That's why Open Your Heart to the Hungry and Homeless continues to be dedicated to responding quickly to the needs of your community, and committed to giving assistance when it is needed. You can continue to make a difference; you can help hungry and homeless people in Minnesota. Take action, donate today, and give where the need is greatest.



“Most of the children we serve arrive to the shelter with the clothes on their backs. Open Your Heart has made sure that stability and education are priorities and we thank you for that.”

—WOMENS ADVOCATES, INC.





# agencies funded in 2007

## Education Grants

Education grants support homeless students who need supplies, clothing and money for school-related fees. Meeting these needs reduces pressure on the student, and allows them to engage in school more fully.

- Ain Dah Yung Our Home Shelter and Beverley Benjamin Youth Lodge *St. Paul*
- Ain Dah Yung Our Home Shelter and Emergency Shelter *St. Paul*
- Alexander House, Inc. *Blaine*
- Ascension Place, Inc. and St. Anne's Place *Minneapolis*
- Bridge for Runaway Youth, Inc. *Minneapolis*
- Care and Share, Inc. *Crookston*
- Catholic Charities of the Archdiocese of St. Paul and Minneapolis *Minneapolis*
- Central MN Task Force on Battered Women *St. Cloud*

- Churches United in Ministry *Duluth*
- Community Action Council and Eagan Lewis House *Lakeville*
- Community Action Council and Hastings Lewis House *Lakeville*
- Cornerstone Advocacy Service *Bloomington*
- Dakota Woodlands, Inc. *Eagan*
- East Metro Women's Council/ East Metro Place *White Bear Lake*
- East Metro Women's Council and East Metro Place II *White Bear Lake*
- East Metro Women's Council and Home Again *White Bear Lake*
- East Metro Women's Council and ROOF Project *White Bear Lake*
- Elim Transitional Housing, Inc. *Columbia Heights*
- Emma Norton Services *St. Paul*
- Freeport West, Inc. *Minneapolis*
- Headwaters Intervention Center, Inc. *Park Rapids*
- Houston County Women's Resources *Hokah*
- Mid-Minnesota Women's Center, Inc. *Brainerd*
- Minneapolis Public Schools/Special School District #1 *Minneapolis*
- Northwoods Coalition for Battered Women *Bemidji*
- Our Saviour's Outreach Ministries/Our Saviour's Housing *Minneapolis*
- People Serving People, Inc. *Minneapolis*
- Perspectives, Inc. *St. Louis Park*
- Red Wing Area Coalition for Transitional Housing *Red Wing*
- Safe Haven Shelter for Battered Women *Duluth*
- Safe Haven Shelter for Youth *Prior Lake*
- Scott-Carver-Dakota CAP Agency, Inc. *Shakopee*
- Sharing and Caring Hands, Inc. *Minneapolis*
- Shelter House *Willmar*
- Simpson Housing Services, Inc. *Minneapolis*

- Sojourner Project, Inc. *Hopkins*
- The Salvation Army *Duluth*
- The Salvation Army *Rochester*
- The Salvation Army *St. Cloud*
- Theresa House, Inc. *Mankato*
- Tubman Family Alliance and Anne Pierce Rogers Shelter *Minneapolis*
- Tubman Family Alliance and Harriet Tubman Shelter *Minneapolis*
- Tubman Family Alliance and Stan and Doris Hill Home *Minneapolis*
- Women's Advocates, Inc. *St. Paul*
- Youthlink *Minneapolis*
- YWCA Cass Clay *Fargo*
- Young Women's Christian Association of St. Paul *St. Paul*

- Family Pathways *Wyoming*
- Keystone Community Services *St. Paul*
- Northfield Community Action Center *Northfield*
- Clear Waters Life Center *Clearbrook*
- Alliance Housing, Inc. *Minneapolis*
- Interfaith Hospitality Network of Greater Rochester *Rochester*
- Lutheran Social Service of Minnesota *St. Paul*
- Channel One, Inc. *Rochester*
- Wayside House, Inc. *St. Louis Park*
- People Incorporated *St. Paul*
- Minnesota Coalition for the Homeless *Minneapolis*
- Ethel Gordon Community Care Center and Shelter *St. Paul*
- Avenues for Homeless Youth *Minneapolis*
- Partners for Affordable Housing *Mankato*
- Damiano of Duluth, Inc. *Duluth*
- Minnesota Assistance Council for Veterans *St. Paul*
- The Salvation Army *Mankato*
- Home of the Good Shepherd *Shoreview*

## Regular Grants

Regular grants enable food and shelter providing agencies throughout Minnesota to secure the necessary supplies, equipment, and improvements to their facilities in order to help people in need.

- Hunger Solutions Minnesota *Statewide*
- Listening House of St. Paul *St. Paul*
- Community Involvement Programs, Inc. *Minneapolis*
- North Shore Horizons, Inc. *Two Harbors*
- The Salvation Army/Harbor Light Multi-Service Center *Minneapolis*
- Casa Guadalupana *St. Paul*
- Normandale Housing Corporation *Edina*
- New Foundations, Inc. *St. Paul*
- Winona Volunteer Services, Inc. *Winona*
- Family Housing Fund/Project Homeless Connect *Minneapolis*
- St. Stephen's Human Services, Inc. *Minneapolis*

Open Your Heart to the Hungry and Homeless funds Hunger Solutions Minnesota helping them distribute food statewide. This support provides funding for the six food banks across Minnesota and nearly 172 local food shelves. Open Your Heart's support is essential to fund food shelves in the summer when food supplies are low and the needs are greater because children are home from school.





# workplace giving campaigns 2007

Charitable giving in the workplace provides the majority of Open Your Heart's funding. With this generous support, we are able to fund the food and shelter providers at work in our community.

## Government

State of Minnesota  
Hennepin County  
Ramsey County  
Washington County  
Dakota County  
Metropolitan Council

League of Minnesota Cities  
Three Rivers Park District  
Northern Lights Combined Federal Campaign  
Lake Superior Combined Federal Campaign

## Nonprofits

Public Radio International  
Minnesota Environmental Fund  
Minnesota Public Radio  
Minnesota Council for Nonprofits  
Community Shares Minnesota

## Cities

Apple Valley  
Bloomington  
Fridley  
Minneapolis  
Plymouth  
St. Paul

## Corporations

C. H. Robinson Worldwide, Inc.  
Fredrikson & Byron P.A.  
Jeffrey Slocum & Associates  
Mackall, Crouse & Moore PLC  
Meyer Scherer and Rockcastle, Ltd.  
Tapemark Company

## Educational Institutions

University of Minnesota (Including the Duluth Campus)  
Hamline University  
University of St. Thomas  
St. Paul Public Schools  
Minneapolis Public Schools  
Mounds View Public Schools  
St. Louis Park Public Schools  
Stillwater Public Schools  
Minnetonka Public Schools

# board & staff 2007

## Board

Mark Abner  
Audrey Anderson  
Nicole Blanchard  
Tonya Brownlow, *Vice President*  
Don Buckner  
Andy Carlton  
Chris Danos  
Mike Fratto, *Board Member Emeritus*  
Noriko Gamblin  
Christina Giese  
Kathryn Graafsgard  
Roger Henry, *Treasurer*  
Paul Jarvis, *Secretary*  
Gary Johnson

Neeti Kambale  
Deanna Kramer  
Sara Liegl  
Shannah Moore  
Tiffany Mulvihill  
Kelly Sowards Opot  
Norma Renville  
Ed Retka, *Board Member Emeritus*  
Jodi Schoh  
Louise Seliski  
Yoji Shimizu, *Board President*  
Tim Stewart  
Danielle Tessmer  
Arlene Gail Wegener  
Wendy Wehr  
Linda Woodstrom

## Staff

Arna Yetter  
*Executive Director*  
Ellie Niederkorn  
*Development Manager*  
Joann Ellis  
*Development Associate*  
Heather McDonough  
*Webmaster*  
Laurie Arnold  
*Administrative Assistant*  
Maureen Driscoll  
*Administrative Assistant*

# revenue & expenses

December 31, 2007

## Total Unrestricted Revenues and Other Support

Contributions, interest and investment income, special events revenue, misc. income and refunds of prior year grants **\$ 808,451**

## Expenses

Program Services	\$ 644,844
Management	\$ 47,089
Fundraising	\$ 47,089
<b>Total Expenses</b>	<b>\$ 739,031</b>



*Giving where the need is greatest.*

Metro Square Building  
121 East Seventh Place  
Suite 110  
St. Paul, MN 55101

Phone 651-224-8011  
Fax 651-229-0727  
mail@oyh.org  
www.oyh.org

