

2004 VOLUNTEERS AND STAFF

"This country will not be a good place for any of us to live in unless we make it a good place for all of us to live in."

— Theodore Roosevelt

Board of Directors

Mike Fratto, President
Linda Woodstrom, Vice President
Roger Henry, Treasurer
Dave Kircher, Secretary

Joe Banken
Tonya Brownlow
Donald Buckner
Iris Burlock
Andrew Carlton
Felicia Christy
Nelda Rhoades Clarke
Helen Goeden
Dan Hickel
Paul Jarvis
Gary Johnson
Deanna Kramer
Sara Liegl
Shannah Moore
Jennifer Palo
Anne Robison
A. Louise Seliski
Yoji Shimizu
Timothy Stewart
Susan Ude
Arlene Gail Wegener
Wendy Wehr

"Never doubt that a small group of thoughtful committed citizens can change the world. Indeed, it is the only thing that ever has."

— Margaret Mead

Staff

Executive Director
Arna Yetter

Development Manager
Sara Redetzke

Campaign Coordinators
Ellie Niederkorn
Debra Caron

Webmaster/Special Projects
Heather McDonough

Administrative Assistants
Bette McCarthy
Laurie Arnold

Committees/ Chairpersons

Education
Timothy Stewart

Finance
Roger Henry

Fundraising
Linda Woodstrom

Grant Audit
Bill Lansing

Grant Review
Nelda Rhoades Clarke

Public Relations
Shannah Moore

Resources
Andrew Carlton

Technology
Gary Johnson/Demos Economacos



Metro Square Building 121 East Seventh Place - Suite 110 St. Paul, MN 55101
Phone: 651-224-8011 Fax: 651-229-0727 E-mail: mail@oyh.org Website: www.oyh.org

"The moral test of a society is how that society treats those who are in the dawn of life – the children; those who are in the twilight of life – the elderly; and those who are in the shadows of life – the sick, the needy and the handicapped." — Hubert Humphrey



It's not about statistics.

It's not about facts and figures.

It's about people in need.



Hunger and Homelessness...

It's about more than just the numbers.



2004 Annual Report

Metro Square Building 121 East Seventh Place - Suite 110 St. Paul, MN 55101
Phone: 651-224-8011 Fax: 651-229-0727 E-mail: mail@oyh.org
www.oyh.org

FACTS:

- Nearly 50% of people served at food shelves are children.

- More than 25% of the homeless in Minnesota live outside the Twin Cities.

- Working families are the largest growing population of people using food shelves.

- Every night, approximately 7,000 Minnesotans stay in a shelter.

Behind these statistics are real people: children, the elderly, families who cannot afford food and shelter.

Hunger and homelessness affect people every day, in every county in Minnesota.



A Message from the Executive Director. . .

When I began working at Open Your Heart to the Hungry and Homeless in 1991, I had a lot to learn. I was eager and dug into my challenges at hand. I have learned a lot since then through this rewarding work. I was surprised when I learned that many of the Minnesota's homeless are children- approximately 47%! I feel proud that Open Your Heart's Education Fund has helped thousands of homeless children since it was started in 1996. In 2004, Open Your Heart awarded more than \$132,000 to 62 agencies to help young people without permanent homes so that they have the essentials they need at school and can participate in school activities.

I also know that the funding that Open Your Heart to the Hungry and Homeless awards to Hunger Solutions Minnesota is used every summer for distribution of fresh, nutritious food through Minnesota's local food shelves and through Second Harvest Food Banks. Our organization helps Minnesotans from Ada, Minnesota, to Zumbrota, Minnesota- helping people of all ages and from all walks of life.

Homelessness and adequate food are still overwhelming problems in Minnesota. I am encouraged though by the people I have met who are working hard to find solutions to these challenges. Staff and volunteers at Open Your Heart to the Hungry and Homeless and at the agencies we fund work diligently behind the scenes. Seeing all of these people work tirelessly to help those in need is the greatest inspiration to me and continues to give me hope. I thank all these dedicated people for "opening their hearts to the hungry and homeless".

Arna Yetter
Executive Director



Houston County Women's Resources

Hokah
\$2,869

Lakes & Prairies Community Action Partnership, Inc.

Moorhead
\$779

Learning Center for Children

Minneapolis
\$5,000

Mahube Community Council

Detroit Lakes
\$750

Mid-Minnesota Women's Center, Inc.

Brainerd
\$1,647

Minneapolis Public Schools/Special School District #1

Minneapolis
\$8,000

Northwoods Coalition for Battered Women, Inc.

Bemidji
\$1,688

Our Saviour's Lutheran Church/Our Saviour's Housing

Minneapolis
\$360

People Serving People, Inc.

Minneapolis
\$3,675

Perspectives, Inc.

St. Louis Park
\$2,625

Safe Haven Shelter for Battered Women

Duluth
\$1,335

The Salvation Army

Duluth
\$1,875

The Salvation Army

Rochester
\$900

The Salvation Army

St. Cloud
\$2,738

Scott-Carver-Dakota CAP Agency, Inc.

Shakopee
\$1,875

Sharing and Caring Hands, Inc.

Minneapolis
\$6,000

Shelter House

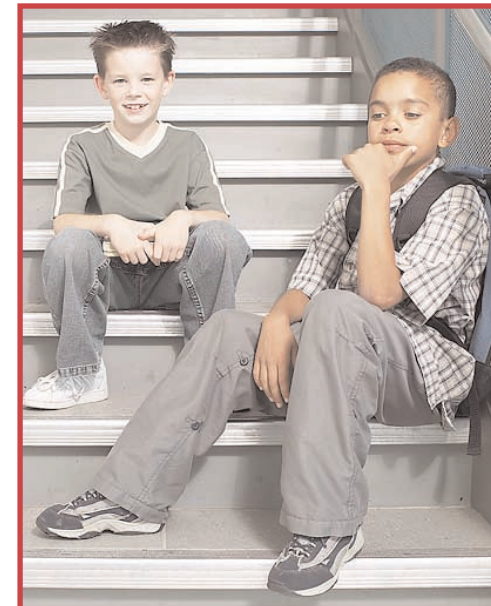
Willmar
\$2,250

Simpson Housing Services, Inc.

Minneapolis
\$3,750

Sojourner Project, Inc.

Hopkins
\$3,000



Someplace Safe

Fergus Falls
\$375

St. Peter and St. Paul Church/Theresa House

Mankato
\$563

Steele County Transitional Housing, Inc.

Owatonna
\$900

Theresa Living Center

St. Paul
\$1,013

Tubman Family Alliance/Anne Pierce Rogers Shelter

Minneapolis
\$1,313

Tubman Family Alliance/Doris and Stan Hill Home

Minneapolis
\$1,313

Tubman Family Alliance/Harriet Tubman Shelter

Minneapolis
\$2,625

Union Gospel Mission, Inc.

Duluth
\$2,625

Violence Intervention Project, Inc.

Thief River Falls
\$394

Volunteers of America/Cornerstone Transitional Housing

Wahkon
\$1,395

Women of Nations

St. Paul
\$1,875

Women's Advocates, Inc.

St. Paul
\$7,500

Women's Transitional Housing Coalition, Inc.

Duluth
\$788

Young Women's Christian Association of Fargo-Moorhead

Fargo
\$2,250

Young Women's Christian Association of St. Paul

St. Paul
\$1,836

YouthLink

Minneapolis
\$4,688

In 2004, Open Your Heart to the Hungry and Homeless provided nearly \$136,000 in education grants. That funding made an impact on the lives of thousands of Minnesota children struggling to live with the issues of hunger and homelessness.

More than 10,000 Minnesota children are either homeless or living in temporary arrangements on any given night. These children and their families often do not have money for school supplies and activities. Just before the beginning of each school year, Open Your Heart to the Hungry and Homeless gives education grants to shelters and housing programs to provide funding for school supplies, book bags, school photos, activity fees. . .those things that keep children from feeling as if they are different from others because of their family's situation.

2004 Education Grants

Alexandra House, Inc.
Blaine
\$3,675

Amherst H. Wilder Foundation/Jackson Street Village
St. Paul
\$2,625

Amherst H. Wilder Foundation/Project Quest
St. Paul
\$3,450

Amherst H. Wilder Foundation/ROOF Project: Rebuilding Our Own Futures
St. Paul
\$2,813

Anoka County Community Action Program, Inc.
Blaine
\$2,250

Ascension Place/St. Anne's Place
Minneapolis
\$3,750

Bi-County Community Action Council, Inc.
Bemidji
\$1,875

Bridge for Runaway Youth, Inc.
Minneapolis
\$2,674

Care and Share, Inc.
Crookston
\$2,100

Catholic Charities of the Archdiocese of St. Paul and Minneapolis/Northwest Outreach
Minneapolis
\$1,463

Catholic Charities of the Archdiocese of St. Paul and Minneapolis/Ramsey County Family Service Center
Minneapolis
\$2,063

Central Minnesota Task Force on Battered Women
St. Cloud
\$1,538

Community Action Council/Lewis House Eagan
Lakeville
\$1,275

Community Action Council/Lewis House Hastings
Lakeville
\$945

Cornerstone Advocacy Service
Bloomington
\$2,250

Dakota Woodlands, Inc.
Eagan
\$1,500

East Metro Women's Council/East Metro Place
White Bear Lake
\$900

East Metro Women's Council/East Metro Place II
White Bear Lake
\$900

East Metro Women's Council/Home Again
White Bear Lake
\$450

East Metro Women's Council/ROOF Project
White Bear Lake
\$900

Elim Transitional Housing, Inc.
Columbia Heights
\$5,625

Ethel Gordon Community Care Center and Shelter
St. Paul
\$1,444

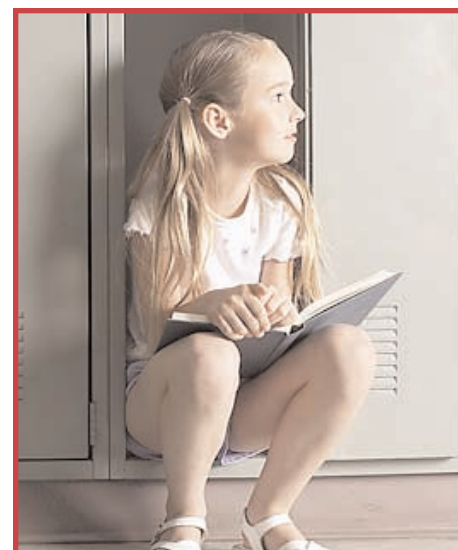
Evangelical Lutheran Church in America/Lutheran Social Service in Minnesota
Minneapolis
\$432

The Evergreen House/Evergreen Shelter
Bemidji
\$2,588

Freepoint West, Inc./Project SOLO
Minneapolis
\$750

Headwaters Intervention Center, Inc.
Park Rapids
\$1,313

Housing Coalition of the St. Cloud Area
St. Cloud
\$1,875



Open Your Heart to the Hungry and Homeless thanks all those who contribute so generously through workplace giving campaigns. . .

State of Minnesota
University of Minnesota
University of Minnesota-Duluth Campus
Ramsey County
Dakota County
Hennepin County
Washington County
City of Minneapolis
City of St. Paul
City of Bloomington
City of Fridley
St. Paul Public Schools
Minneapolis Schools
Stillwater Schools
Mounds View Schools
Metropolitan Airport Commission
Metropolitan Council
League of Minnesota Cities
Lake Superior Combined Federal Campaign
Olmsted County Combined Federal Campaign
Twin Cities Area Combined Federal Campaign
Central Minnesota Combined Federal Campaign
Boston Scientific
C.H.Robinson Worldwide, Inc.
City of Apple Valley
Fridley Public Schools
Hamline University
Public Radio International
St. Paul Neighborhood Energy Consortium
City of Plymouth
St. Louis Park Public Schools

New 2004 Workplace Giving Campaigns

Three Rivers Park District
Minnetonka Public Schools
Minnesota Public Radio
University of St. Thomas
Concordia University
Elk River Public Schools
Lockridge Grindal Nauen PLLF
Mackall, Crouse & Moore PLC
Fredrikson & Byron P.A.

How Contributions Help. . .

Revenue and Expenses Year End December 31, 2004

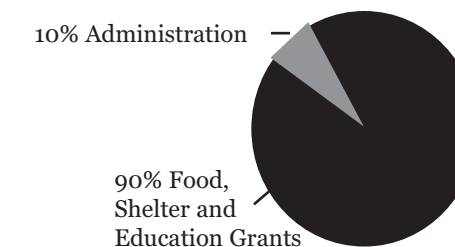
Revenue

Campaign Pledges Received	\$717,513
Other Contributions	\$63,019
Interest and Investment Income	\$622
Refund from 2003 Grants	\$9,618
Total Support and Revenue	\$790,772

Expenses

Program Services	\$807,882
Fundraising	\$34,834
Management & Administration Expenses	\$56,452
Total Expenses	\$899,168

Where Your Money Goes. . .



Since its beginning, Open Your Heart to the Hungry and Homeless has awarded nearly \$8 million in grants to Minnesota's food and shelter providers.

Open Your Heart to the Hungry and Homeless works to help hungry and homeless Minnesotans through granting funds to food and shelter providers and to raise awareness of the needs of people who are hungry and homeless.

2004 Grants

Ascension Place/St. Anne's Place
Minneapolis
\$9,992

Advocates Against Domestic Abuse
Aitkin
\$10,000

Advocates for Family Peace
Grand Rapids
\$8,593

Alliance Housing, Inc.
Minneapolis
\$11,319

Cass Lake/Bena Family Council
Cass Lake
\$5,000

Channel One, Inc.
Rochester
\$10,000

CROSS Christians Reaching Out in Social Service
Maple Grove
\$1,238

CROSS Christians Reaching Out in Social Service
Rogers
\$7,685

Churches United for the Homeless
Moorhead
\$10,000

Coalition on Affordable Transitional Community Housing
Lakeville
\$6, 285

Community Emergency Assistance Program, Inc.
Brooklyn Park
\$6,892

Dakota Woodlands, Inc.
Eagan
\$8,842

Damiano of Duluth, Inc.
Duluth
\$4,000

Emma Norton Residence/Emma Norton Services
St. Paul
\$8,245

The Evergreen House
Bemidji
\$5,000



The Evergreen House
Bemidji
\$9,700

Face to Face Health and Counseling Service, Inc.
St. Paul
\$500

Families Moving Forward
Minneapolis
\$10,000

Family Pathways
Wyoming
\$4,509

The Family Place
St. Paul
\$6,450

Greater Mankato Area Coalition for Affordable Housing, Inc.
Mankato
\$5,750

Home of the Good Shepherd
St. Paul
\$9,718

Interfaith Hospitality Network of Greater Rochester
Rochester
\$4,693

Interfaith Hospitality Network of Greater Rochester
Rochester
\$2,500

Keystone Community Service
St. Paul
\$9,040

Learning Center for Children
Minneapolis
\$5,000

Mid-Minnesota Women's Center, Inc.
Brainerd
\$8,850



Minneapolis Crisis Nursery
Golden Valley
\$10,000

Minnesota Coalition for the Homeless, Inc.
Minneapolis
\$5,000

The Mission, Inc./Pastor Paul's Mission
Minneapolis
\$12,000

National Association for the Education of Homeless Children and Youth
Plymouth
\$9,678

Northwoods Coalition for Battered Women, Inc.
Bemidji
\$7,693

Our Saviour's Lutheran Church/Our Saviour's Housing
Minneapolis
\$10,920

Overcomers International Fellowships/Dream Center of St. Cloud
St. Cloud
\$5,000

People Serving People, Inc.
Minneapolis
\$7,603

Peta Wakan Tipi
St. Paul
\$10,000

Safe Haven Shelter for Youth
Prior Lake
\$3,904

St. Stephen's Human Services
Minneapolis
\$15,000

The Salvation Army
Fergus Falls
\$2,200

The Salvation Army
Mankato
\$9,623

In 2004, Open Your Heart to the Hungry and Homeless provided \$280,000 to Hunger Solutions Minnesota for distribution of food across the state.

The Salvation Army
Rochester
\$4,800

The Salvation Army
Rochester
\$2,430

Scott-Carver-Dakota CAP Agency, Inc.
Shakopee
\$5,000

Sojourner Project, Inc.
Hopkins
\$1,512

Theresa Living Center
St. Paul
\$3,820

Tubman Family Alliance
Minneapolis
\$10,000

Veap, Inc. (Volunteers Enlisted to Assist People)
Bloomington
\$3,000

Warren Emergency Food Shelf, Inc.
Warren
\$1,750

Women of Nations
St. Paul
\$10,000

Women's Advocates, Inc.
St. Paul
\$13,000

